

LICHENS OF HOWARD COUNTY

(Last updated 04-November-2014)

GENUS	SPECIES	COMMON NAME	ABUNDANCE	PREFERRED SUBSTRATE OR HABITAT	REFERENCE	LOCATION OF VOUCHER P,V,R	DATE VOUCHER P,V,R	COMMENTS
CRUSTOSE								
1	<i>Amandinea punctata</i>	Tiny button lichen	Uncommon	bark and wood rarely rock	R	Western Regional Park	17-Feb-11	on bark
2	<i>Arthonia species</i>	Asterisk lichen	Uncommon	bark	P,V	Gorman Stream Valley NRA	30-Dec-11	on bark of Tulip Tree
3	<i>Buellia spuria</i>	Sunken button lichen	Uncommon	siliceous rock especially sandstone	P	Wincopin Neck	6-Nov-09	on rock
4	<i>Buellia erubescens</i>	Common button lichen	Common	bark deciduous trees	P	Big Branch	28-Nov-09	on deciduous tree
5	<i>Caloplaca cerina</i>	Gray-rimmed firedot lichen	Uncommon	bark	P,V	Morning Choice PVSP	5-Jul-11	on beech tree
6	<i>Caloplaca citrina</i>	Mealy firedot lichen	Uncommon	bark	P,V	Big Branch	18-Mar-11	on bark - Solems
7	<i>Caloplaca feracissima</i>	Sidewalk firedot lichen	Uncommon	sidewalks, cement, limestone	P	Centennial Park	20-Mar-11	on rock
8	<i>Caloplaca ferruginea</i>	Red firedot lichen	Uncommon	bark	P,V	Triadelphia Reservoir	4-Apr-11	on bark
9	<i>Caloplaca flavovirescens</i>	Sulphur firedot lichen	Uncommon	rock	P	HC Fairgrounds	9-Oct-11	on rock
10	<i>Caloplaca holocarpa</i>	Firedot Lichen	Uncommon	bark deciduous trees	P,V	Central Farm Environs	5-Feb-11	on deciduous tree --McClures
11	<i>Candelariella efflorescens</i>	Powdery goldspeck lichen	Common	bark rarely wood	P	Schooley Mill Park	18-Mar-10	on deciduous tree
12	<i>Candelariella vitellina</i>	Common goldspeck lichen	Common	noncalcareous rocks rare on bark	P	Wilde Lake	27-Mar-10	on rock
13	<i>Diploschistes muscorum</i>	Cowpie lichen	Uncommon	soil or wood with moss or lichens	P	Daniels PVSP	8-Nov-11	on moss
14	<i>Diploschistes scruposus</i>	Crater lichen	Uncommon	noncalcareous rocks	R	Woodbine Environs	1-Mar-11	on rock
15	<i>Fuscidea recensia</i>	Quilt lichen	Uncommon	rock	P,V	Daniels PVSP	8-Nov-11	on rock
16	<i>Graphis scripta</i>	Common script lichen	Uncommon	smooth bark	P	Schooly Mills Park	18-Mar-10	on Hornbeam
17	<i>Lecanora allophana</i>	Brown-eyed rim-lichen	Common	bark	P,V	Woodbine Environs	1-Mar-11	on deciduous tree
18	<i>Lecanora hagenii</i>	Hagen's rim-lichen	Uncommon	bark	P,V	Mt. Albert Road	19-Mar-11	on white pine bark - McClures
19	<i>Lecanora hybocarpa</i>	Bumpy rim-lichen	Uncommon	bark	R	Centennial Park	20-Mar-11	on deciduous bark
20	<i>Lecanora strobilina</i>	Mealy rim-lichen	Common	bark	P,V	Rockburn Branch Park	6-Feb-11	on deciduous tree
21	<i>Lecanora thysanophora</i>	Maple dust lichen	Uncommon	bark	V	Western Regional Park	16-Oct-11	on bark
22	<i>Lecidella stigmatea</i>	Rock disk lichen	Uncommon	rock	P	Daniels PVSP	18-Jun-11	on rock
23	<i>Lepraria finkii</i>	Fluffy dust lichen	Very common	shaded rocks, bark, mosses, etc.	P	Troy Hill	19-Mar-10	on pine bark
24	<i>Loxospora pustulata</i>	Pustule crust lichen	Uncommon	bark usually deciduous trees	P,V	Pigtail	14-Nov-11	on deciduous tree
25	<i>Micarea peliocarpa</i>	Shadow dot lichen	Uncommon	shaded bark or moist noncalcareous rock	P	Alpha Ridge Park	19-Dec-12	rock wall
26	<i>Ochrolechia species</i>	Saucer lichen	Uncommon	rock	P	Alpha Ridge Park	19-Dec-12	rock wall
27	<i>Pertusaria paratuberculifera</i>	Spotted wart lichen	Uncommon	bark deciduous trees	P	Wilde Lake	27-Mar-10	on deciduous tree
28	<i>Pertusaria plittiana</i>	Rock wart lichen	Common	rock	P	Henryton PVSP	27-Oct-09	on rock
29	<i>Pertusaria subpertusa</i>	Mesa wart lichen	Uncommon	bark	P	Central Farm Environs	5-Feb-11	on deciduous tree --McClures
30	<i>Pertusaria texana</i>	Texas wart lichen	Uncommon	bark	V	Western Regional Park	16-Oct-11	on deciduous bark
31	<i>Pertusaria velata</i>	Rimmed wart lichen	Uncommon	bark	V	Western Regional Park	16-Oct-11	on deciduous bark
32	<i>Polysporina privigna</i>	Common coal-dust lichen	Uncommon	cracks in rocks	L	E.G. Worthley's Paper		cracks in rocks
33	<i>Porpidia albocaerulescens</i>	Smoky-eye boulder lichen	Very common	rock	P	Schooley Mill Park	18-Mar-10	on rock
34	<i>Porpidia crustulata</i>	Concentric boulder lichen	Uncommon	rock	P	MPEA	9-Nov-12	on rock
35	<i>Pyrenula pseudobufonia</i>	Eastern pox lichen	Uncommon	bark deciduous trees	P	Troy Hill	19-Mar-10	on deciduous tree
36	<i>Scoliciosporum chlorococcum</i>	City dot lichen	Uncommon	bark	P,V	West Friendship Park	7-Oct-11	on bark
37	<i>Trypethelium virens</i>	Speckled blister lichen	Uncommon	bark deciduous trees	P	Mt. Pleasant	8-Oct-11	on deciduous bark
38	<i>Verrucaria nigrescens</i>	Black stone lichen	Common	dry rocks	P	Marriottsville PVSP	24-Mar-10	on rock
FOLIOSE								
39	<i>Candelaria concolor</i>	Candleflame Lichen	Common	nutrient rich substrates	P	Centennial Park	19-Jan-11	on deciduous tree -- B. Ott
40	<i>Cetrelia chicitae</i>	Sea storm lichen	Uncommon	trees and rocks	P	Daniels PVSP	6-Apr-10	on deciduous tree
41	<i>Cetrelia olivetorum</i>	Sea storm lichen	Uncommon	trees and rocks	R	MPEA	27-Feb-11	on deciduous tree
42	<i>Dermatocarpon luridum</i>	Streamside stippleback	Uncommon	rocks at water's edge	P,V	MPEA	27-Feb-11	rock at river's edge
43	<i>Flavoparmelia baltimorensis</i>	Rock greenshield lichen	Uncommon	rock	P	Marriottsville PVSP	24-Mar-10	on rock
44	<i>Flavoparmelia caperata</i>	Common greenshield lichen	Very common	mostly bark less common rock	P	Alpha Ridge Park	24-Mar-10	on deciduous tree
45	<i>Heterodermia speciosa</i>	Powdered fringe liche	Uncommon	usually bark	P	Schooley Mill Park	4-Nov-14	on deciduous tree
46	<i>Hypotrachyna livida</i>	Wrinkled loop lichen	Uncommon	bark deciduous trees	R	Mt. Pleasant	8-Oct-11	on deciduous tree
47	<i>Leptogium lichenoides</i>	Tattered jellyskin	Uncommon	mossy rocks	P,V	Woodbine environs	1-Mar-11	mossy rock
48	<i>Myelochroa aurentata</i>	Powdery axil-bristle lichen	Common	bark deciduous trees	P,V	Chaconas Property	2-Apr-10	on deciduous tree
49	<i>Parmelia saxatilis</i>	Salted shield lichen	Uncommon	bark	R	MPEA	27-Feb-11	on deciduous tree
50	<i>Parmelia squarrosa</i>	Bottlebrush shield lichen	Uncommon	bark	R	Henryton PVSP	4-Jan-10	on deciduous tree
51	<i>Parmelia sulcata</i>	Hammered shield lichen	Uncommon	bark	P,V	Woodbine environs	1-Mar-11	on deciduous tree

52	<i>Parmotrema</i>	<i>crininum</i>	Salted ruffle lichen	Common	bark - mostly sunlit oaks	P	Troy Hill	19-Mar-10	on deciduous tree
53	<i>Parmotrema</i>	<i>hypoleucinum</i>	Southern powdered ruffle lichen	Uncommon	bark - mostly conifers	P,V	Ceder Lane Park	14-Dec-12	on 2-needle conifer tree
54	<i>Parmotrema</i>	<i>hypotropum</i>	Southern powdered ruffle lichen	Common	bark deciduous trees	P,V	Henryton PVSP	4-Jan-11	on deciduous tree
55	<i>Parmotrema</i>	<i>submarginale</i>	Unperforated ruffle lichen	Uncommon	bark deciduous trees	V	Manor Woods	21-Oct-11	on deciduous tree
56	<i>Parmotrema</i>	<i>perlatum</i>	Powdered ruffle lichen	Common	bark deciduous trees rarely rocks	P	MPEA	19-Mar-11	on rock in shade
57	<i>Parmotrema</i>	<i>stuppeum</i>	Powder-edged ruffle lichen	Uncommon	bark	P,V	Pigtail	25-Oct-11	on tree trunk
58	<i>Peltigera</i>	<i>leucophlebia</i>	Veined freckle-pelt lichen	Uncommon	mossy rock	P,V	Cascade Trail PVSP	3-Dec-11	on rock over stream
59	<i>Peltigera</i>	<i>praetextata</i>	Scaly dog lichen	Uncommon	mossy soil, trees, or rocks	P,V	Daniels PVSP	6-Apr-10	on mossy rock
60	<i>Phaeophyscia</i>	<i>adiastola</i>	Powder-tipped shadow lichen	Uncommon	rock, less often on other substrates	P,V	Daniels PVSP	2-Dec-11	on rock
61	<i>Phaeophyscia</i>	<i>ciliata</i>	Smooth shadow lichen	Uncommon	bark, wood, moss over rocks	P	Daniels PVSP	8-Nov-11	on wood
62	<i>Phaeophyscia</i>	<i>rubropulchra</i>	Orange-cored shadow lichen	Common	rocks and trees in shaded forest	P,V	Robinson Nature Center	30-Sep-11	on deciduous tree
63	<i>Physcia</i>	<i>aipolia</i>	Hoary rosette lichen	Common	bark mostly in open habitats	R	Schooley Mill Park	18-Mar-10	on deciduous tree
64	<i>Physcia</i>	<i>americana</i>	Powdery rosette lichen	Uncommon	bark deciduous trees	R	Western Regional Park	14-Feb-11	on deciduous tree
65	<i>Physcia</i>	<i>millegrana</i>	Mealy rosette lichen	Very common	bark	P,V	West Friendship Park	7-Oct-11	on deciduous tree
66	<i>Physcia</i>	<i>stellaris</i>	Star rosette lichen	Common	well-lit bark (isolated trees or branches)	P,V	Chaconas Property	2-Apr-10	base of tree
67	<i>Physcia</i>	<i>subtilis</i>	Slender rock rosette lichen	Uncommon	rock	P,V	West Friendship Park	23-Oct-11	on rock
68	<i>Physconia</i>	<i>detersa</i>	Bottle frost lichen	Uncommon	bark	P,V	Daniels PVSP	18-Feb-11	on deciduous tree
69	<i>Platismatia</i>	<i>glauca</i>	Ragbag	Uncommon	bark usually conifer	P,V	Big Branch	15-Oct-11	on bark
70	<i>Punctelia</i>	<i>rudecta</i>	Rough speckled shield lichen	Common	bark or shaded rock	P	Rockburn Branch Park	6-Feb-11	on deciduous tree
71	<i>Pyxine</i>	<i>caesiopruinosa</i>	Buttoned rosette lichen	Uncommon	bark of hardwoods	P	A. C. Skorepa, et al.		
72	<i>Xanthomendoza</i>	<i>weberi</i>	Bare-bottom sunburst lichen	Uncommon	bark or rarely rock	P,V	HC Fairgrounds	9-Oct-11	on bark
73	<i>Xanthoparmelia</i>	<i>conspersa</i>	Peppered rock-shield	Uncommon	rock in sunny locations	P,V	Daniels PVSP	8-Nov-11	on rock
74	<i>Xanthoparmelia</i>	<i>cumberlandia</i>	Cumberland rock-shield	Uncommon	rock	P,V	Wilde Lake	27-Mar-10	on plastic cap

FRUITICOSE

75	<i>Cladonia</i>	<i>subtenuis</i>	Dixie reindeer lichen	Uncommon	sandy soil	P	Rockburn Branch Park	13-Sep-11	sandy soil with moss
76	<i>Cladonia</i>	<i>apodocarpa</i>	Stalkless cladonia	Uncommon	rock & ground	P	MPEA	3-Apr-11	rock
77	<i>Cladonia</i>	<i>chlorophaea (group)</i>	Mealy pixie-cup	Uncommon	wood, bark, soil, rock	P,V	Pigtail	12-Apr-10	mossy soil
78	<i>Cladonia</i>	<i>coniocraea</i>	Common powderhorn	Uncommon	soil, wood, tree bases in shade	P	Long Corner Patuxent	9-Sep-09	rotting wood
79	<i>Cladonia</i>	<i>crystalata</i>	British soldiers	Common	wood, bark, soil	P	Rockburn Branch Park	11-Sep-10	wood fence
80	<i>Cladonia</i>	<i>didyma</i>	Southern soldiers	Uncommon	soil or wood	V	PVSP	27-Feb-12	wood
81	<i>Cladonia</i>	<i>fimbriata</i>	Trumpet lichen	Uncommon	soil or rotting wood	V,P	Big Branch	15-Oct-11	soil
82	<i>Cladonia</i>	<i>gracilis turbinata</i>	Smooth cladonia	Uncommon	soil	V,P	Rockburn Branch Park	11-Oct-11	sandy soil
83	<i>Cladonia</i>	<i>macilenta</i>	Lipstick powderhorn	Uncommon	soil, wood, tree bases in shade	V,P	Patuxent River State Park	8-Mar-11	wood
84	<i>Cladonia</i>	<i>ochrochlora</i>	Smooth-footed powderhorn	Uncommon	soil, wood	V,P	Daniels PVSP	18-Jun-11	wood
85	<i>Cladonia</i>	<i>parasitica</i>	Fence-rail cladonia	Uncommon	old wood	V,P	Henryton PVSP	19-Apr-11	fence post
86	<i>Cladonia</i>	<i>peziziformis</i>	Turban lichen	Uncommon	soil or wood	P,V	Henryton PVSP	5-Mar-11	wood -- McClures
87	<i>Cladonia</i>	<i>pleurota</i>	Red-fruited pixie-cup	Uncommon	wood, bark, soil	P	Pigtail	12-Apr-10	mossy soil
88	<i>Cladonia</i>	<i>pyxidata</i>	Pebbled pixie-cup	Uncommon	acidic soil or granite	P,V	Pigtail	18-Mar-11	soil
89	<i>Cladonia</i>	<i>squamosa</i>	Dragon cladonia	Common	shady rocks, soil, wood, bark	P,V	Daniels PVSP	18-Jun-11	bark
90	<i>Cladonia</i>	<i>subcariosa</i>	Peg lichen	Uncommon	soil or rocks with thin soil	R	Pigtail	14-Nov-11	soil
91	<i>Dibaeis</i>	<i>baeomyces</i>	Pink earth lichen	Uncommon	soil	L	E.G. Worthley's Paper		soil
92	<i>Ramalina</i>	<i>americana</i>	Sinewed ramalina	Uncommon	trees	P,V	Manor Woods	21-Oct-11	bark
93	<i>Ramalina</i>	<i>complanata</i>	Bumpy ramalina	Uncommon	trees	P,V	Manor Woods	21-Oct-11	bark
94	<i>Usnea</i>	<i>ceratina</i>	Warty beard lichen	Uncommon	on trees	P,V	Schooley Mill Park	29-Mar-11	bark
95	<i>Usnea</i>	<i>mutabilis</i>	Bloody beard lichen	Uncommon	on trees	P,V	Gorman Valley Stream NRA	16-Nov-11	bark
96	<i>Usnea</i>	<i>strigosa</i>	Bushy beard lichen	Uncommon	on trees	P	Chaconas Property	2-Apr-10	on deciduous tree

Epithet in red updated in April 2024

KEY:

P = Photograph
V = Voucher Specimen
R = Record with no P or V
L = Historical Literature Only

Crustose



Arthonia species



Buellia erubescens



Buellia erubescens



Caloplaca cerina



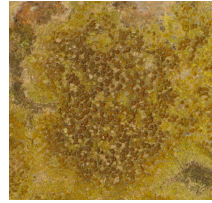
Caloplaca citrina



Caloplaca feracissima



Caloplaca ferruginea



Caloplaca flavovirescens



Caloplaca holocarpa



Candelariella efflorescens



Candelariella vitellina, *Micarea peliocarpa*, *Ochrolechia* species



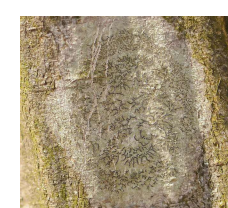
Candelariella vitellina



Diploschistes muscorum



Fuscidea recensa



Graphis scripta



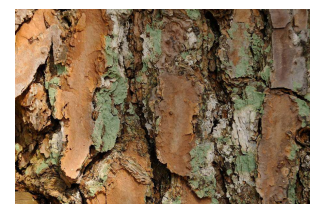
Lecanora allophana



Lecanora hagenii



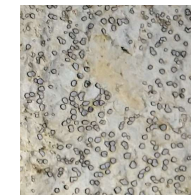
Lecidella stigmatæa



Lepraria lobificans



Lepraria lobificans



Lecanora strobilina



Porpidia albocaerulescens

Pertusaria paratuberculifera



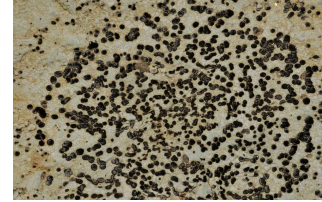
Porpidia albocaerulescens

Pertusaria plittiana



Porpidia crustulata

Pertusaria subpertusa



Porpidia crustulata

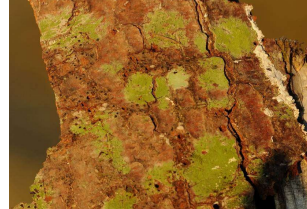
Porpidia albocaerulescens



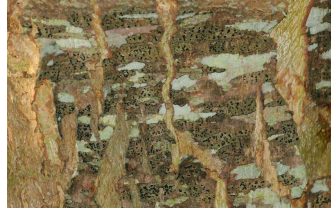
Pyrenula pseudobufonia



Pyrenula pseudobufonia



Scoliosporum chlorococcum

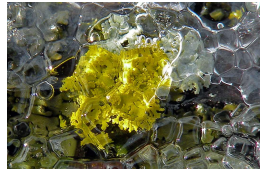


Trypethelium virens



Verrucaria nigrescens

Foliose



Candelaria concolor



Cetrelia chicitae



Dermatocarpon luridum



Flavoparmelia baltimorensis



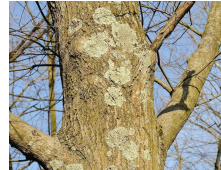
Flavoparmelia caperata



Heterodermia speciosa



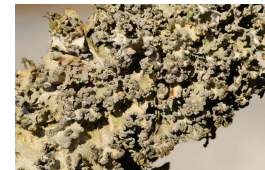
Leptogium lichenoides



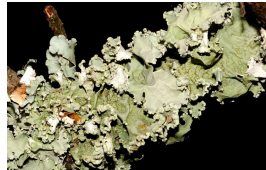
Myelochroa aurulenta



Parmotrema crinitum



Parmotrema hypotropum



Parmotrema hypoleucinum



Parmotrema stuppeum



Parmelia sulcata



Parmotrema perlatum



Petigera leucophebia



Peltigera praetextata



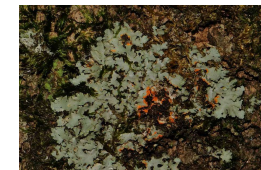
Physcia millegrana



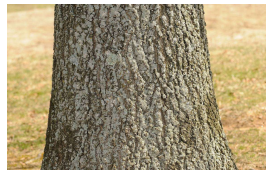
Phaeophyscia adiastrata



Phyaephyscia ciliata



Phaeophyscia rubropulchra



Physcia stellaris



Physcia subtilis



Physconia detersa



Platismatia glauca



Punctelia rudecta



Xanthomendoza weberi



Xanthoparmelia conspersa



Xanthoparmelia cumberlandia

Fruiticose



Cladonia apodocarpa



Cladonia chlorophaea (group)



Cladonia coniocraea



Cladonia cristatella



Cladonia fimbriata



Cladonia gracilis turbinata



Cladonia macilenta



Cladonia ochrochlora



Cladonia parasitica



Cladonia peziziformis



Cladonia peziziformis



Cladonia pleurota



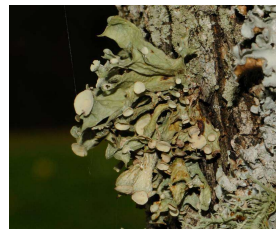
Cladonia pyxidata



Cladonia squamosa



Cladonia subtenuis



Ramalina americana



Ramalina complanata



Usnea ceratina



Usnea mutabilis



Usnea strigosa