

None

*Xylaria longiana* Rehm



OVERALL: Patuxent Branch Trail,  
10/19/2020, *S. Muller*.  
CLOSEUP: Patuxent Branch Trail,  
10/19/2020, *S. Muller*.  
CLOSEUP: Patuxent Branch Trail,  
10/19/2020, *S. Muller*.  
SPECIMENS: Patuxent Branch Trail,  
10/19/2020, *J. Solem*.

None

[\*Xylaria longiana\*](#)  
*Xylariaceae*



J	F	M	A	M	J	J	A	S	O	N	D
					---	---	---	---	---	+	---

**ID:** Body white (asexual) to black (sexual), finely roughened; irregularly spindle-shaped and sparingly branched.

**Habitat:** Solitary, scattered. On decaying wood and bark of oaks.

**Body:** 1/2 – 1" x 1/16 – 1/8" [12 – 25 mm x 1 – 2 mm]  
White when young (asexual stage), black in age (sexual stage) when perithecia below surface emerge. Irregularly spindle-shaped and sparingly branched. Finely roughened, wrinkled and minutely cracked in age. Flesh white, fibrous-tough.

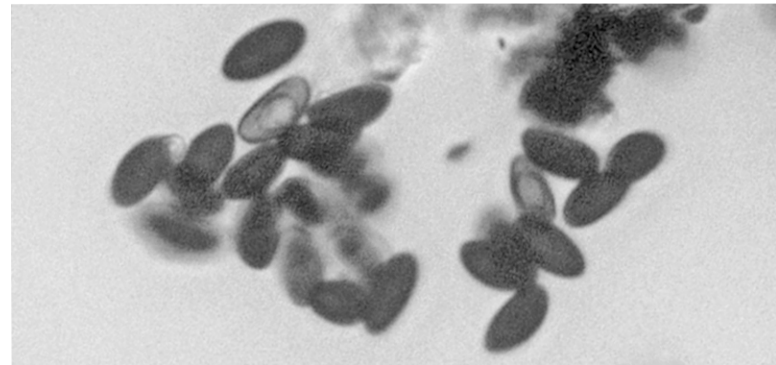
**Spores:** Black. Widely fusiform; with straight germ slits that run nearly the length of the spore, smooth, dark brown.

**Frequency:** Uncommon.

**Locations:** PATBT.

**Notes:** Mycobank 222508. Patuxent Branch Trail specimen verified by examination of spores by R. Solem.

**References:** BBB 349fn. Kuo.



SPORES (9.5-11.7 x 4.5-5.8 μm): Patuxent Branch Trail, 10/19/2020, *R. Solem*.