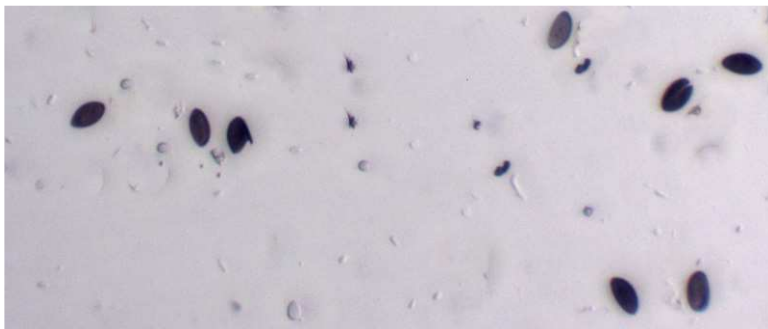


None

Rosellinia sp
De Notaris



OVERALL: Mount Pleasant, 12/27/2015, B. Ott.
CLOSE-UP: Mount Pleasant, 12/27/2015, B. Ott.
SPORES (9.9 – 12.4 X 4.9 – 6.1 µm): Mount Pleasant, 12/27/2015, R. Solem.

None

Rosellinia
Xylariaceae



J	F	M	A	M	J	J	A	S	O	N	D
---	---	---	---	---	---	---	---	---	---	---	---

ID: Tiny brown (becoming black) balls w/ a single pimple; in groups in a single layer; some are on white/yellow subiculum.

Habitat: Solitary, groups. On decaying wood.

Fruiting Body: ~1/32" [0.6 mm]

Perithecium brown (black in age); some species are surrounded by sulphur yellow/orange/ cream-colored subiculum.

Spores: *White*. Fusiform, smooth, brown. Various sizes.

Frequency: Uncommon.

Locations: HAMVL, MPENA, MTPLT, WINTR.

Notes: Mycobank 4985. Similar species required detailed microscopic examination to differentiate.

Reference:

http://www.inhs.illinois.edu/files/5013/2111/4752/Pyrenos6_GSMNP_Fungal_Diversity2008.pdf