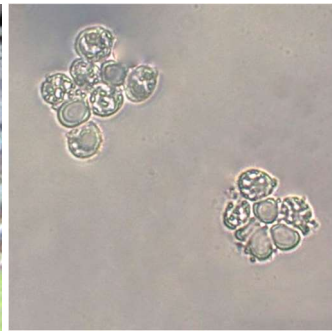


Leafy Brain  
Jelly Leaf

*Phaeotremella frondosa*  
(Persoon) Spirin & Malysheva



Leafy Brain  
Jelly Leaf

[Phaeotremella frondosa](#)  
Tremellaceae

J	F	M	A	M	J	J	A	S	O	N	D
++-	+++	++-	+-	---	---	---	+-	---	---	++	+-

**ID:** Body pale/dark reddish-brown; lettuce-like rubbery folds.

**Habitat:** Solitary, scattered. On decaying hardwoods. Parasitic on mycelium (not fruiting bodies) of *Stereum* spp.

**Fruiting Body:** 2 – 10" x 2 – 4" [5 – 25.5 cm x 5 – 10 cm]  
Pale/dark reddish-brown, rarely pale brownish-yellow. Lettuce-like cluster of leaf-like folds. Rubbery.

**Spores:** *Pale yellow*. Ellipsoid, smooth, hyaline.

**Frequency:** Very common.

**Locations:** BIGBR, DANPV, GONRA, HAMVL, HENPV, HOUCH, HOWCH, MPENA, MCHPV, ORRBB, PIGTL, RKBRP, ROGOR, WATLP, WINTR.

**Notes:** Mycobank 173674. Pigtail 8/7/2014 specimen identified by examination of spores by R. Solem. Related species, *P. foliacea*, is found on conifers.

**Synonym:** *Tremella frondosa*.

**References:** Bar 104. BBF 433, 436. BBH 315. Bin 435. Bni 514. BRBD 306, 80. K&M 373. Lin 384, 754. Roo 452fn. W&L 514.

OVERALL: Pigtail, 10/23/2009, R. Solem.

OVERALL: Pigtail, 8/7/2014, J. Solem.

SPORES (8.2 – 9.3 X 6.8 – 8.3 µm): Pigtail, 8/7/2014, J. Solem.