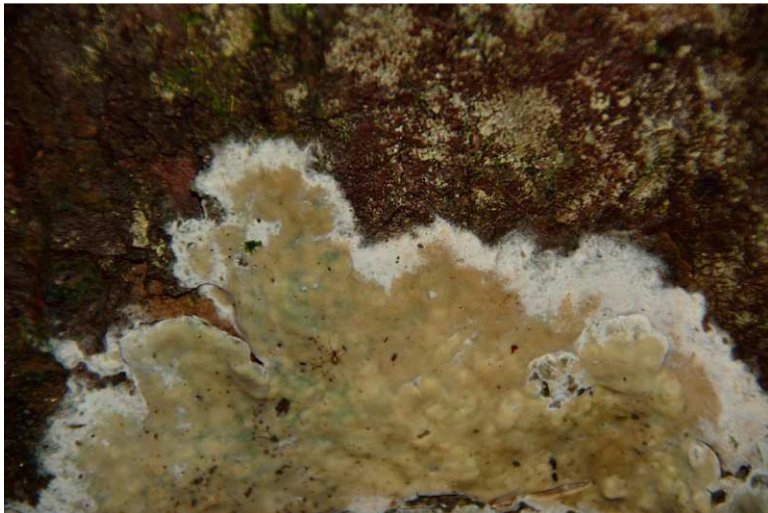


Wet Rot

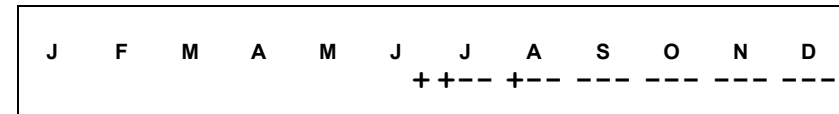
Coniophora sp



OVERALL: Daniels, 7/2/2013, R. Orr.
CLOSEUP: Daniels, 7/2/2013, R. Orr.

Wet Rot

[Coniophora](#) sp
Coniophoraceae



ID: Brownish crust, olive-white along edges.

Habitat: Trunks of living trees, coniferous and deciduous logs, timbers in buildings.

Fertile surface: 1.6 – 16" [4 – 40 cm]
Brownish (olive-white along margin). Smooth/uneven/bumpy w/ warts & rhizomorphs.

Frequency: Uncommon.

Locations: DANPV.

References: Lin 415, 592.