

Wood Mushroom

*Agaricus silvaticus* Schaeffer

Wood Mushroom

*Agaricus silvaticus*  
Agaricaceae



TOP: Rockburn Branch Park, 6/16/2009, *J. Solem*.  
SIDE: Rockburn Branch Park, 6/16/2009, *R. Solem*.  
SIDE: Hammond Village, 9/13/2020, *J. Solem*.  
GILLS, VEIL, and STALK: Hammond Village, 9/13/2020, *J. Solem*.  
GILLS and RING: Rockburn Branch Park, 6/16/2009, *J. Solem*.

J	F	M	A	M	J	J	A	S	O	N	D
			- - - -	- - - -	- + - -	- - - -	- - + -	- + + -	- + - -	+ - -	

**ID:** Cap off-white, covered w/ pinkish-brown scales; convex (nearly flat in age). Stalk dingy pink (darker in age); persistent flaring ring.

**Habitat:** Scattered, groups. On ground in coniferous, mixed, or hardwood (occasionally) forests.

**Cap:** 2 – 4" [5 – 10 cm]  
Off-white. Dry. Covered w/ obscure to dense pinkish-brown scales. Convex (nearly flat in age). Margin inrolled when young. Flesh white, firm (ages/stains pink/red).

**Gills:** Grayish-pink (dark reddish-brown in age). Free. Crowded.

**Spores:** Gray/dark brown. Ellipsoid, smooth, hyaline.

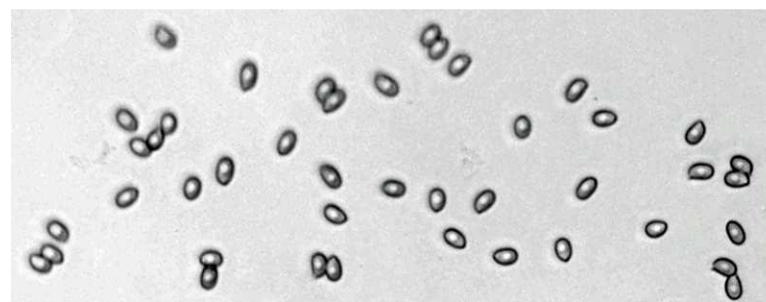
**Stalk:** 2.4 – 4.3" x 0.4 – 0.8" [6 – 11 cm x 1 – 2 cm]  
Dingy pink (pinkish-brown in age). Nearly smooth; fibrils above/below ring. Usually cylindrical or tapers up w/ rather bulbous base. Partial veil may leave persistent, flaring ring. Flesh white (stains pink/red). Hollow.

**Frequency:** Common.

**Locations:** HAMVL, HIRIP, MCHPV, MPENA, PIGTL, RKBRP, ROBNC, ROGOR, WINTR, WSTRP.

**Notes:** Mycobank 244265. Rockburn Branch Park and Hammond Village specimens identified by examination of spores by R. Solem.

**References:** Bar 193. Bni 327. BBF 52key. Lae 163. McK 260,31. M&M 277. Phi 220.



SPORES (2-6.2 x 3.4-3.8 µm): Hammond Village, 9/13/2020, *R. Solem*.