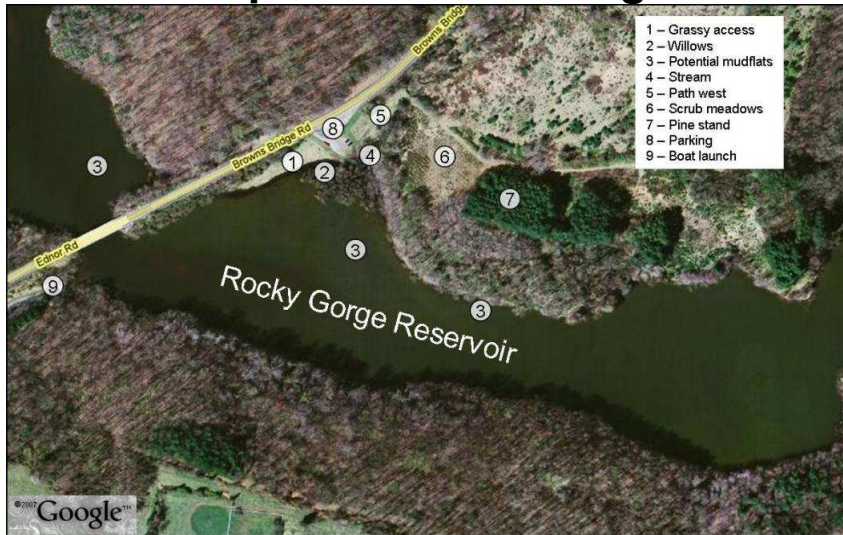


# Directions to Browns Bridge

## Rocky Gorge Reservoir

Browns Bridge Road, Highland Maryland 20777

### Map of Browns Bridge



### Directions to Browns Bridge



From US 29 go west on MD 216 for 1.0 mile to the Fulton sign. Just ahead, in front of St. Paul's Church, go straight onto Lime Kiln Road. Continue 1.9 miles to Browns Bridge Road. Turn left on Browns Bridge Road; continue 0.6 mile to a gravel parking lot on the left jut before the bridge. There are two additional parking areas after crossing the bridge, one on the left and one on the right. When using MD 108 west of Clarksville, turn left on MD 216 in Highland; continue southeast 1.2 miles to the traffic light at Browns Bridge Road. Turn right; continue 1.8 miles to the reservoir.