

Dead Man's Fingers

Xylaria polymorpha
(Persoon) Greville [sensu lato]



OVERALL (old): MPENA,
1/9/2018, *J. Solem*.
OVERALL: MPENA, 7/8/2009,
J. Solem.
OVERALL (old): Savage Park,
8/24/2009, *J. Solem*.
OVERALL (old): MPENA,
1/9/2018, *J. Solem*.
OVERALL (old): MPENA,
1/9/2018, *J. Solem*.

Dead Man's Fingers

Xylaria polymorpha
Xylariaceae

J	F	M	A	M	J	J	A	S	O	N	D
+	-	-			+	-	+	+	-	-	-

ID: Body white (asexual) to black (sexual), finely roughened; irregularly club-shaped.

Habitat: Solitary (infrequent), dense clusters (usually). On/near decaying hardwood stumps.

Fruiting Body: 0.8 – 3.5" x 0.4 – 1.1" [2 – 9 cm x 1 – 3 cm]
White when young (asexual stage), black in age (sexual stage) when perithecia below surface emerge. Irregularly club-/spindle-shaped; increase in diameter as they mature. Finely roughened, wrinkled and minutely cracked in age. Flesh white, fibrous-tough.

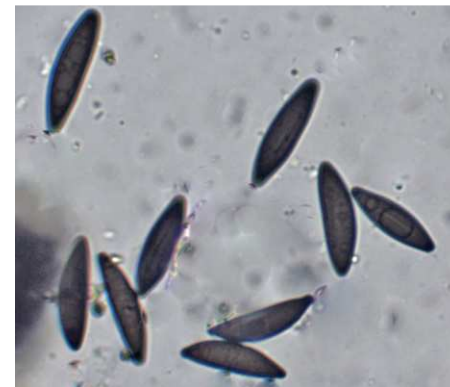
Spores: Dark brown. Fusiform (one side flattened), smooth, dark, w/ straight germ slit running 1/2-2/3 length of spore.

Frequency: Fairly common.

Locations: CASCT, DANPV, HENPV, MPENA, RKBRP, ROGOR, SAVPK.

Notes: Mycobank 246876. Middle Patuxent Environmental Area specimen identified by examination of spores by R. Solem.

References: Bar 79. BBB 351. BBF 526. BBH 364. E&S 83. K&M 396. Lin 376, 697. M&M 521. Phi 375. Roo 418. Stu 388. W&L 88.



OVERALL (23.0 – 29.0 X 6.9 – 8.0 μm): MPENA, 1/9/2018, *R. Solem*.
ENLARGED (w/ germ slit): MPENA, 1/9/2018, *R. Solem*.