

Red Raspberry Slime

Tubifera
(Batsch) J.F. Gmelin



OVERALL: Mt Pleasant, 6/8/2009, B Ott.
 OVERALL (young): High Ridge Park, 8/15/2020, J. Solem.
 OVERALL (interior): High Ridge Park, 8/15/2020, J. Solem.
 OVERALL: Manor Woods E.S., 6/27/2014, J. Solem.
 OVERALL (maturing): Schooley Mill Park, 5/27/2009, J. Solem.
 OVERALL (powdery): Pigtail, 6/10/2016, J. Solem.

Red Raspberry Slime

Tubifera
Tubiferaceae

J	F	M	A	M	J	J	A	S	O	N	D
		- - - -	- - -	+++	+++	+++	+++	+++	+++	+- - -	- - - +

ID: Body pink/rose-red cake-like “tapioca” becoming red-/purplish-brown at maturity. Species differ in color and spore size.

Habitat: Dense clusters. On well-decayed logs or wood debris (occasionally in leaf litter).

Fruiting Body: 1/64 x 1/8 – 1/4” high, up to 6” long [0.5 x 3 – 5 mm x 15 cm]. Young sporangia delicate pink/bright rose-red; at maturity spore-bearing bodies red-/purplish-brown w/ metallic, iridescent surface, base off-white/brownish, spongy.

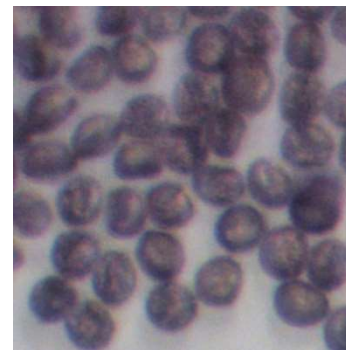
Spores: *Umber-brown*; round, finely reticulate.

Frequency: Abundant.

Locations: BENBR, BIGBR, BOLPL, BRNBR, CASCT, CEDLP, DANPV, FRANF, GONRA, HENPV, HIRIP, LONGC, MANWD, MCHPV, MPENA, MURHL, OTHER, PIGTL, RKBPR, ROBNC, ROGOR, SVMLT, SAVPK, SLMLP, SUKBR, SYRIV, TUFTS, UMDCF, WINTR, WSKPV, WSTRP.

Notes: Mycobank 149364.

References: Bar 46. Lin 848, 751. Myx 159. W&L 606.



SPORES (6.9-7.4 μm): Pigtail, 6/10/2016, R. Solem.