



TOP: Wincopin Trail, 10/10/2008, *J. Solem*.

CAP, GILLS and STALK: Wincopin Trail, 10/10/2008, *J. Solem*.

J	F	M	A	M	J	J	A	S	O	N	D
				---	---	---	---	+	---	+	---

ID: Cap yellowish w/ purplish-red scales/fibers; disc depressed. Gills yellow. Stalk color like cap.

Habitat: Scattered, groups. On decaying conifers (especially pine).

Cap: 2 – 4" [5 – 10 cm]

Yellowish base color w/ red/purplish-red scales/fibers. Dry. Convex, disc depressed (nearly flat in age). Flesh pale yellow, thick.

Gills: Yellow. Attached/notched. Close. Depth = cap flesh.

Spores: *White*. Broadly elipsoid, smooth.

Stalk: 2 – 4.3" x 0.4 – 1" [5 – 11 cm x 1 – 2.5 cm]

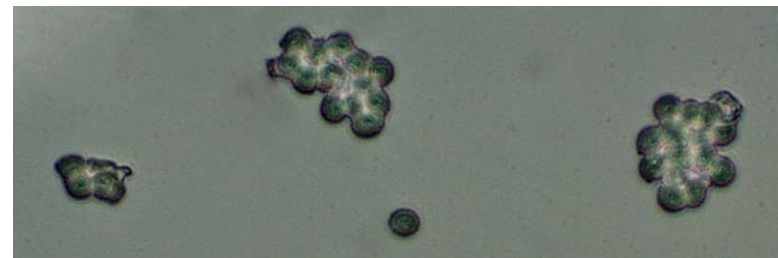
Yellowish ground color. Red/purplish-red scales/fibers. Dry. Cylindrical, often curved. Flesh pale yellow. Often hollow in age.

Frequency: Uncommon.

Locations: WINTR.

Notes: Mycobank 254523. Wincopin Trail specimen identified by examination of spores by *R. Solem*.

References: Bar 302. BBF 266, 314. BBH 119. Bni 119. K&M 381. Lin 808, 327. M&M 161. Phi 52. Stu 96.



SPORES (5.9-6.6X 4.8-5.4 µm): Wincopin Trail, 10/10/2008, *R. Solem*.