

Cinnabar Polypore

Trametes sanguinea
(Linnaeus) Lloyd



UPPER SURFACE and PORES: High Ridge Park, 9/9/2009, *R. Solem*.
 PORES: MPENA, 3/29/2018, *J. Solem*.
 SIDE: MPENA, 3/29/2018, *J. Solem*.
 UPPER SURFACE (old): Old Frederick Road, 5/22/2009, *R. Solem*.

Cinnabar Polypore

[*Trametes sanguinea*](#)
Polyporaceae

J	F	M	A	M	J	J	A	S	O	N	D
+++	++-	-++	+-+	+++	+++	+++	+++	+++	+++	+++	+++

ID: Body reddish-orange; fan/kidney-shape, wrinkled; stalkless. Pores dark orange-red. Use KOH.

Habitat: Solitary, groups, overlapping clusters. On decaying wood.

Fruiting Body: 1.1 – 5.5" x 0.6" [3 – 14 cm x 1.6 cm]
 Orange to red/reddish-orange (mixed w/ other colors/fades in age). Smooth or wrinkled. Fan-/kidney-shaped, convex/flattened. Laterally attached (1.1 x 0.8" [3 x 2 cm]). Margin rounded/sharp. Flesh corky/fibrous-tough.

Pores: Dark/pale orange-red. Circular/angular (2 – 4/mm). Tubes (2 – 3 mm), none at margin.

Spores: *Whitish*. Cylindric, smooth, hyaline.

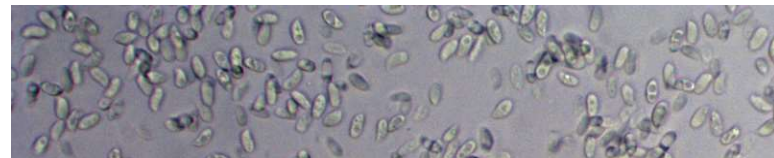
Frequency: Abundant.

Locations: ALRGP, BOLPL, CASCT, CEDLP, DFWMA, FRANF, GATWY, GONRA, GWACP, HENPV, HIRIP, MPENA, MCHPV, MTPLT, NOLAP, OFRRD, PATBT, PVSP, RKBPR, ROGOR, SLMLP, UMDCF, WINTR.

Notes: Mycobank 473624. KOH turns flesh reddish/blackish, turns pores green. MPENA specimen verified by examination of spores by *R. Solem*.

Synonym: *Pycnoporus cinnabarinus*. *Trametes cinnabarinus*.

References: Bar 149. BBF 393, 399. BBH 282. Bni 439. E&S 322. K&M 330. Lin 486, 512. M&M 429. Phi 304. Roo 383. Stu 340. W&L 533.



SPORES (5.6-6.8 X 2.6-3.3 µm): MPENA, 3/29/2018, *R. Solem*