

None

Tapinella panuoides (Fries) E.-J. Gilbert



OVERALL (old): Wincopin Trail, 8/11/2018, A. Looker.
 GILLS: Wincopin Trail, 8/11/2018, A. Looker.
 OVERALL: Wincopin Trail, 6/15/2009, R. Solem.
 GILLS: Wincopin Trail, 6/15/2009, R. Solem.

None

[*Tapinella panuoides*](#)
 Tapinellaceae

| | | | | | | | | | | | |
|---|---|---|---|-----|-----|----|-----|-----|-----|-----|---|
| J | F | M | A | M | J | J | A | S | O | N | D |
| | | | | --- | +++ | +- | +++ | --- | --- | --- | |

ID: Cap yellow-brown; convex (depressed in age). Gills easily separated from cap.

Habitat: Scattered, overlapping clusters. On decaying conifer wood.

Cap: 1 – 4.4" [2.5 – 11 cm]

Olive-yellow/yellow-brown. Convex (flat w/ depressed disc in age). Margin inrolled, uplifted (thin and wavy in age). Flesh whitish/pale cream.


Gills: Pale yellow/yellow-orange. Radiate from point of attachment. Sometimes crossveined, wavy, or corrugated. Easily separated from cap.

Spores: Yellowish. Ellipsoid.

Stalk: None/rudimentary.

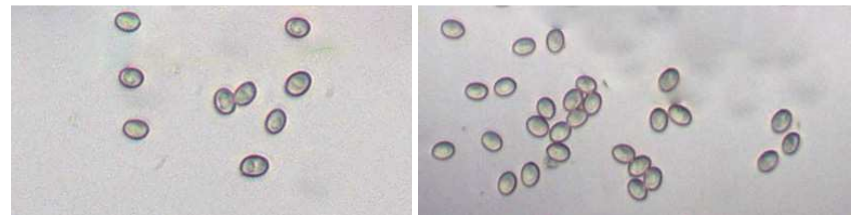
Frequency: Occasional.

Locations: CASCT, WFRDP, WINTR.

Notes:  Mycobank 253796. Wincopin Trail(6/15/2009) and West Friendship Park specimens verified by examination of spores by R. Solem. (No photos of West Friendship Park specimen.)

Synonym: *Paxillus panuoides*.

References: Bar 221. BBH 159. Bni 276. BBF 221, 304. E&S 241fn. Kuo. Lin 672, 499. McK 313. Stu 207. M&M 288.



SPORES (4.2-4.9 x 3.0-3.5 µm): Wincopin Trail, 6/15/2009, R. Solem.

SPORES (4.5-5.0 x 3.5-4.0 µm): West Friendship Park, 7/19/2014, R. Solem.