

Red-mouth Bolete

Suillellus subvelutipes
(Peck) Murrill



TOP: Big Branch, 8/19/2011, *R. Solem*
 FLESH, PORES, STALK: Big Branch, 8/19/2011, *R. Solem*
 TOP: Big Branch, 8/19/2011, *R. Solem*
 PORES and STALK: Big Branch, 8/19/2011, *R. Solem*
 OVERALL: Rockburn Branch Park, 7/28/2010, *J. Solem*.
 PORES and STALK: Rockburn Branch Park, 7/28/2010, *J. Solem*.

Red-mouth Bolete

Suillellus subvelutipes
Boletaceae

J	F	M	A	M	J	J	A	S	O	N	D
					---	+++	--+	---			

ID: Cap variable. Pores red to orange. All parts stain blue/blue-black. Use KOH and NH₄OH

Habitat: Solitary, scattered. On ground under hardwoods (oak).

Cap: 2.4 – 5.1" [6 – 13 cm]

Color variable (cinnamon-/yellow-/reddish-brown to reddish-orange/ orange-yellow). Convex (broadly convex/nearly flat in age). Finely velvety (finely cracked in age). Dry. Cap, flesh, pores, and stalk quickly stain blue/blue-black. Flesh yellow, stains blue instantly, fades to white.

Pores: Red to orange (paler in age). Circular (1 – 2/mm). Tubes (8 – 26 mm). Stain dark blue/blue-black quickly when bruised.


Spores: *Pale brown*. Fusoid/subventricose, smooth.

Stalk: 1.1 – 4" x 3/8 – 3/4" [3 – 1.6 x 1 – 2 cm]

Reddish-yellow w/ red dots. Young specimens w/ yellow stiff hairs at base (dark red in age).

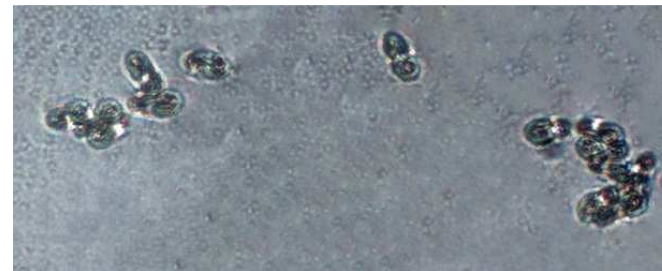
Frequency: Occasional.

Locations: GONRA, HAMVL, PIGTL, RKBRP, WINTR.

Notes:  Mycobank 291265. Big Branch specimen identified by examination of spores by R. Solem. Cap stains mahogany-red w/ KOH or NH₄OH; blued flesh turns rust-orange w/ KOH or NH₄OH.

Synonyms: *Boletus subvelutipes*

References: BBF 347, 367. Bin 85. BBH 204. Bni 375. BRB1 167, 315. BRB2 315. K&M 124. Kuo. Stu 251. W&L 231.



SPORES (12.2-13.0 X 4.8-5.7 µm): Big Branch 8/19/2011, *R. Solem*.