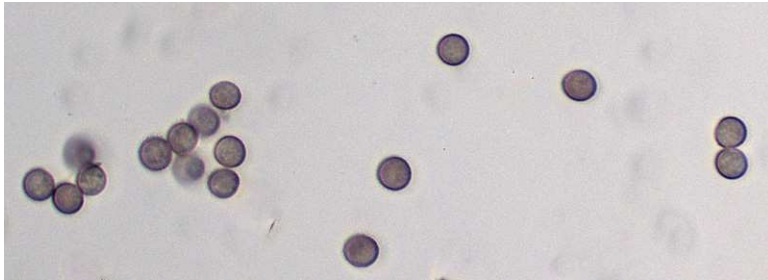


Chocolate Tube Slime Mold

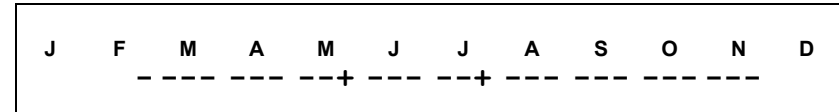
Stemonitis splendens
Rostrafinsky



OVERALL: Morning Choice Trail, PVSP, 5/29/2016, *J. Solem*
SPORES (7.0 – 7.7 [round] μm): Morning Choice Trail, PVSP, 5/26/2016, *R. Solem*

Chocolate Tube Slime Mold

[*Stemonitis splendens*](#)
Stemonitidaceae



ID: Tufts of brown “chocolate tubes” on short black stalks.

Habitat: Dense clusters. On decaying wood

Fruiting Body: Tufts 0.3 – 0.8” tall [7 – 20 mm]
Chocolate-/reddish-brown cylindrical fruiting bodies on thin stalks, occurring in tufts; film-like base (hypothallus) brown and membranous.

Stalk: ca. 1/16” long [1.5 – 2 mm]
Shining black. Stalk less than 1/4 length.

Spores: *Brown*. Round, reticulated, light brown.

Frequency: Uncommon.

Locations: MCHPV, ROBNC.

Notes: Mycobank 230930 . Morning Choice Trail, PVSP, specimen identified by examination of spores by R. Solem as consistent with *S. splendens* (*vide* Lincoff). Robinson Nature Center specimen based on macrocharacteristics only.

References: Lin 854. Myx 153.