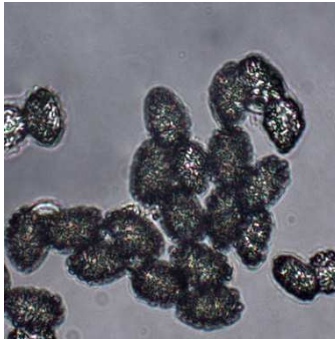


Eyelash Cup *Scutellinia scutellata* (Linnaeus) Lambotte



CLOSEUP (fertile surface): Henryton, PVSP, 6/28/2009, R. Solem.

OVERALL: Henryton, PVSP, 6/28/2009, J. Solem.

OVERALL: Daniels, PVSP, 7/6/2012, B. Ott.

CLOSEUP (sterile surface): Morning Choice Trail, PVSP, 8/26/2014, J. Solem.

SPORES (21.2 – 21.8 X 12.7 – 13.1 µm): Morning Choice Trail, PVSP, 8/26/2014, J. Solem.

Eyelash Cup

[Scutellinia scutellata](#)  
Pyronemataceae

J	F	M	A	M	J	J	A	S	O	N	D
-+			++	+-	+++	+++	+++	+++	+++	+++	+-

**ID:** Body small, scarlet red/bright orange, smooth; cup-/pill-shaped; margin covered w/ tiny dark hairs.

**Habitat:** Dense groups (usually). Mostly on moss/decayed wood, occasionally on adjacent ground.

**Fruiting Body:** 0.1 H x up to 0.6" W [2 x 6 – 15 mm]

Cup-/pill-shaped. No stem. Flesh thin.

Fertile surface (top/inner surface) scarlet red to bright orange, smooth.

Sterile surface (under/outer surface) brownish or pale orangish, covered with tiny dark hairs; margin w/ longer, eyelash-like, dark hairs.

**Spores:** *White/hyaline*. Ellipsoid, roughened, filled w/ oil drops, hyaline.

**Frequency:** Abundant.

**Locations:** BENBR, BIGBR, CASCT, CEDLP, DANPV, FRANF, FULSA, HENPV, LONGC, MANWD, MCHPV, MCLUR, MPENA, MURHL, NOFPK, OTHER, PIGTL, RKBPR, ROBNC, ROGOR, SLMLP, UMDCF, WATFD, WINTR, WSKPV, WSTRP.

**Synonym:** *Peziza scutellina*.

**Notes:** Mycobank 119491. Morning Choice Trail specimen identified by examination of spores by R. Solem. Darkness of spores on left is an artifact of the photograph.

**References:** Bar 60. BBB 253. BBH 344. Bni 543. E&S 65. K&M 357. Kuo. K&M 357. Lin 353, 604. M&M 526. Phi 373. Rog. Roo 471. Stu 427. W&L 178fn.