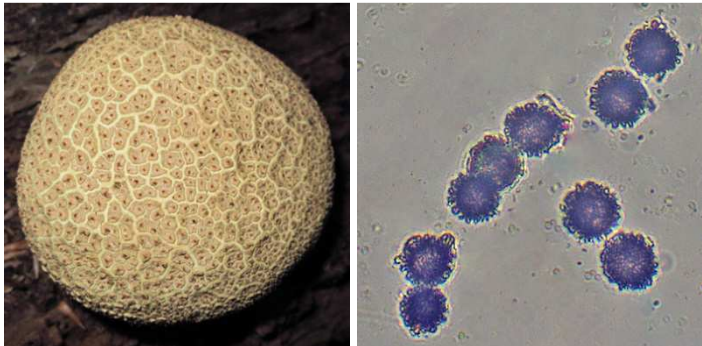


Common Earthball
Pigskin Puffball

Scleroderma citrinum Persoon



OVERALL: Browns Bridge, 9/30/2008, *J. Solem*.
 OVERALL (old): Long Corner, PRSP, 9/13/2009, *R. Solem*.
 CUT SURFACE (maturing spores) and MATURE :
 High Ridge Park, 6/23/2009, *R. Solem*.
 OVERALL: Morning Choice Trail, PVSP, 7/29/2014, *J. Solem*.
 SPORES (11.4 – 13.9 µm): Morning Choice Trail, PVSP, 7/29/2014, *R. Solem*.

Common Earthball
Pigskin Puffball

Scleroderma citrinum
Sclerodermataceae

J	F	M	A	M	J	J	A	S	O	N	D
					-	+++	+++	+++	+++	+++	++

ID: Body brown/golden-brown w/ coarse warts/scales, top pore/irregular tears; spherical/ellipsoid. Spores white and solid, then marbled gray/purplish-black; blackish-brown and powdery at maturity. Use KOH.


Habitat: Solitary, scattered, groups. On ground/decaying wood in forests.

Fruiting Body: 0.8 – 2” H x 1 – 4” W [1.5 – 4 cm x 2.5 – 10 cm]
 Pale-/yellow-/golden-brown, covered w/ coarse warts/angular scales. Round hole/irregular tears at apex. Spherical/ellipsoid. Thick, tough, warty skin. Attached to substrate by thick, stalk-like mycelial base.

Spores: Gleba *white* when very young, then *marbled dark gray/purplish/black*, solid and firm; *blackish-brown* and spores powdery at maturity. Round, strongly reticulate.

Frequency: Abundant.

Locations: ANNRK, BENBR, BIGBR, BRNBR, CASCT, CEDLP, DANPV, DFWMA, FRANF, HENPV, HIRIP, LONGC, MANWD, MCHPV, MCLUR, MPENA, MTPLT, OTHER, PATBT, PIGTL, RKBPR, ROBC, ROGOR, SLMLP, SUKBR, TRIRS, TUFTS, UMDCF, WINTR, WSKPV, WSTRP.

Notes:  Mycobank 181865. KOH turns cap darker red. Surface skin rots away, exposing pores. Shell remains after spores disperse. . Morning Choice Trail specimen identified by examination of spores by R. Solem.

Synonyms: *S. aurantium*, *S. vulgare*.

References: Bar 92. BBF 456, 16. BBH 331. Bni 500. E&S 356. K&M 355. Lin 839, 654. M&M 464. Phi 335. Roo 448. Stu 413. W&L 210fn.