

None

*Radulomyces paumanokensis*  
J. Horman, B. Ortiz & Nakasone



OVERALL: Schooley Mill Park,  
9/13/2015, *J. Solem*.  
CLOSEUP: Western Regional Park,  
6/24/2015, *J. Solem*.  
CLOSEUP: Western Regional Park,  
6/24/2015, *J. Solem*.  
OVERALL: Western Regional Park,  
6/24/2015, *J. Solem*.  
OVERALL: Robinson Nature Center,  
6/25/2015, *J. Solem*.

None

*Radulomyces paumanokensis*  
Meruliaceae

J	F	M	A	M	J	J	A	S	O	N	D
-	-	-	-	-	-	+	-	+	+	-	-

**ID:** Fruiting body spines white/orange-white. Fertile surface fused at base w/ long branching spines.

**Habitat:** Fruiting bodies develop in the cracks and furrows of bark of dead trees (oak).

**Fertile surface:** Up to 12" long [30 cm]  
Cluster of radiating, branching, pendant spines up to 0.8" [20 mm] long, fused at base, then branching multiple times; white/orange-white/pale orange. Surface smooth. Flesh dense.

**Spores:** *White*. Round, smooth.

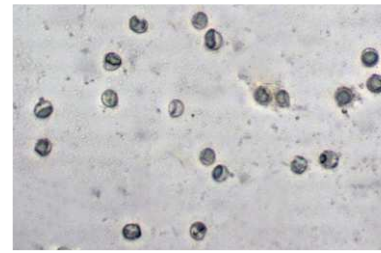
**Frequency:** Occasional.

**Locations:** HIRIP, ROBNC, SAVPK, SLMLP, WSTRP, WSKPV.

**Notes:** Mycobank 825443. Schooley Mill Park and Western Regional Park specimens identified by examination of spores by R. Solem.

**References:**

[https://www.researchgate.net/publication/327187093\\_Radulomyces\\_paumanokensis\\_J\\_Horman\\_B\\_Ortiz\\_K\\_Nakasone\\_sp\\_nov\\_Fungal\\_Biodiversity\\_Profiles\\_51-60\\_Cryptogamie\\_Mycologie\\_2018\\_39\\_2\\_1-47](https://www.researchgate.net/publication/327187093_Radulomyces_paumanokensis_J_Horman_B_Ortiz_K_Nakasone_sp_nov_Fungal_Biodiversity_Profiles_51-60_Cryptogamie_Mycologie_2018_39_2_1-47)



SPORES (5.2-5.8 [round] µm): Western Regional Park, 6/24/2015, *R. Solem*.