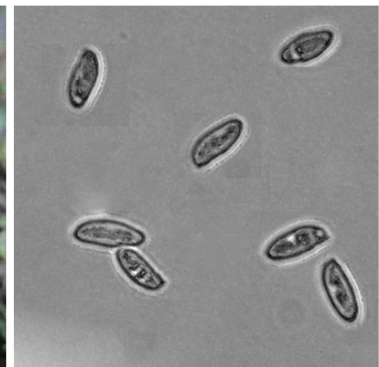


Gilled Bolete

Phylloporus rhodoxanthus
(Schweinitz) Bresadola



OVERALL: High Ridge Park, 8/13/2008, *J. Solem*.
TOP: Scott's Cove, 6/27/2014, *J. Solem*.
OVERALL: High Ridge Park, 6/21/2009, *R. Solem*.
GILLS and STALK: Guilford Park, 9/1/2011, *R. Solem*.
GILLS and STALK: Scott's Cove, 6/27/2014, *J. Solem*.
SPORES (9.6 – 11.0 X 3.8 – 4.1 µm): Scott's Cove, 6/27/2014, *R. Solem*.

Gilled Bolete

Phylloporus rhodoxanthus
Boletaceae

J	F	M	A	M	J	J	A	S	O	N	D
					++	+++	+++	+++	---		

ID: Cap dull red, somewhat velvety; cracks may expose yellowish flesh; convex (depressed in age). Stalk dull reddish-brown, bruises yellow; yellow mycelium at base. Use NH₄OH.

Habitat: Solitary, small groups. On ground/moss in hardwoods (especially oak), conifers, or mown grass at edge of mixed forest.

Cap: 1.5 – 4" [4 – 10 cm]

Dull red/reddish-brown/olive-brown. Dry; somewhat velvety; cracks may expose yellowish flesh. Convex (flat/shallowly depressed in age). Flesh yellow, thick in center.

Fertile Surface ("Gills"): Deep yellow/olivaceous-yellow. Decurrent. Moderately well spaced. Separable from cap, often wrinkled w/ crossveining.

Spores: Olivaceous/light yellow-brown. Fusiform, smooth.

Stalk: 1.1 – 3.5" x 0.2 – 0.5" [3 – 9 cm x 6 – 12 mm]

Dull yellow/reddish-brown. Nearly smooth. Tapers down. Bruises yellow. Yellow mycelium. Solid.

Frequency: Abundant.

Locations: BIGBR, BRNBR, BOLPL, CEDLP, DANPV, FRANF, GONRA, GUILP, HENPV, HIRIP, LONGC, MANWD, MCHPV, MPENA, NOLAP, PIGTL, RKBRP, ROBNC, ROGOR, SAVPK, SLMLP, SYRIV, TRIRS, WSTRP, WINTR.

Notes: Mycobank 356685. Scott's Cove and Guilford Park records identified by examination of spores by R. Solem. NH₄OH turns cap blue-gray. Fertile surface *looks* like gills.

References: Bar 159. BBF 353, 369. Bni 414. BRB1 222, 331. BRB2 286. Bin 171. E&S 227. K&M 312. Lin 672, 324, 326. M&M 353. Phi 253. Roo 150.