

None

Phleogena faginea (Fries & Palmnquist) Link



OVERALL: MPENA, 10/3/2009, *R. Orr*.
CLOSEUP (mature): Henryton, PVSP,
2/26/2018, *B. Ott*.
CLOSEUP: Morning Choice Trail,
11/3/2016, *R. Orr*.

None

[*Phleogena faginea*](#)
Phleogenaceae

J	F	M	A	M	J	J	A	S	O	N	D
---	---	+				---	---	---	+++	+-	---

ID: Tiny whitish/gray ball on short gray stalk, often w/ several stalks clustered.

Habitat: Scattered, groups, clusters. Decaying hardwood.

Fruiting Body:

Head: 1/16 – 1/8" [1.5 – 3 mm] White (gray, then brown in age). Nearly round/flattened/irregular. Dry. Finely cracked/roughed.

Stalk: <= 1/4" high " <= 1/32" thick [6 mm x 0.5 mm] Gray. Equal. Cylindrical/somewhat flattened; sometimes w/ longitudinal grooves.

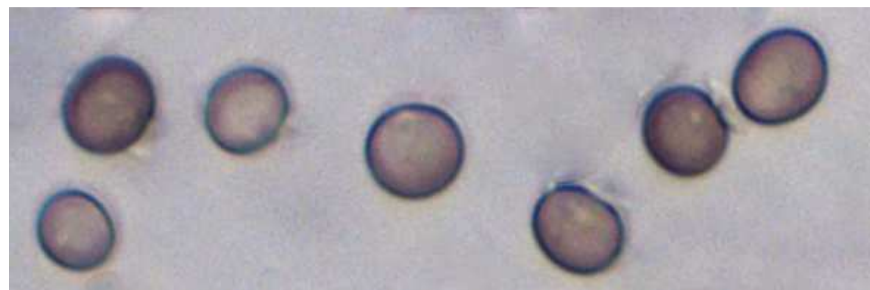
Spores: *Dark*. Round, thick-walled, brown.

Frequency: Fairly common.

Locations: CEDLP, GONRA. HENPV, MCHPV, MPENA, WSKPV.

Notes: Mycobank 164073. Morning Choice Trail, PVSP specimen identified by examination of spores by *R. Solem*.

References: BBF 432, 435. Bni 489fn. Rog.



SPORES (5.9 – 6.6 μ m [round]): Morning Choice Trail, 11/3/2016, *R. Solem*.