

Wrinkled Crust

Phlebia radiata Fries



OVERALL: Schooley Mill Park, 11/3/2010, *J. Solem*.

FERTILE SURFACE: Schooley Mill Park, 11/3/2010, *J. Solem*.

OVERALL: Robinson Nature Center, 10/9/2015, *J. Solem*.

Wrinkled Crust

Phlebia radiata
Meruliaceae

| | | | | | | | | | | | |
|---|---|---|---|---|-----|-----|-----|-----|-----|-----|-----|
| J | F | M | A | M | J | J | A | S | O | N | D |
| | + | + | | + | --- | --- | --- | --- | +++ | +++ | +++ |

ID: Body orange to pink; crust-like, wavy; flesh pink, soft/leathery. Fertile surface salmon, irregular folds w/ elongate pores.

Habitat: Irregular, radiating from central point. On hardwood and conifer logs.

Fruiting Body: 0.4 – 4” across” [1 – 10 cm]
Orange to pink. Nearly smooth w/ edges slightly folded over. Crust fungus, wavy w/ white hairy edge. Flesh (3 mm) pink/purplish, spongy/leathery.

Fertile Surface: Orange to pink (rarely tan w/ orangish edges). Wrinkles and folds radiate more or less from a central point.

Spores: *White*. Somewhat sausage-shaped, smooth, hyaline.

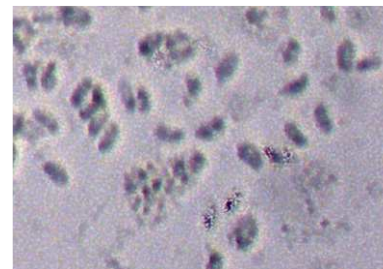
Frequency: Common.

Locations: CASCT, GONRA, HENPV, MANWD, MCLUR, MURHL, OTHER, PIGTL, ROBNC, RKBPR, SLMLP, WSKPV, WSTRP, WINTR.

Synonym: *Phlebia merismoides*.

Notes: Mycobank 204324. Robinson Nature Center and Wincopin Trail records identified by examination of spores by R. Solem.

References: Bar 152. BBF 441key. Bni 437fn. BRBD 328fn. K&M 307. Kuo. Lin 424, 587. Phi 318.



SPORES (3.8-4.3 X 1.8-2.1 µm):
Robinson Nature Cener,
10/9/2015, *R. Solem*.