

Ravenel's Stinkhorn
Eastern Stinkhorn

Phallus ravenelii
Berkeley & M.A. Curtis



OVERALL (including "EGG"): Big Branch, 10/29/2016, *J. Solem*.
YOUNG and MATURE River Hill, 11/14/2008, *E. Earp*.
FRUITING BODY: Big Branch, 10/29/2016, *J. Solem*.
FRUITING BODY (old): Big Branch, 10/16/2008, *J. Solem*.

Ravenel's Stinkhorn
Eastern Stinkhorn

Phallus ravenelii
Phallaceae

J	F	M	A	M	J	J	A	S	O	N	D
							-+-	---	++	+++	+-+

ID: Body whitish-/pinkish-lilac; cylindric w/ slimy greenish-brown fruiting surface. Foul smelling. Body egg-like before emergence.

Habitat: Solitary, scattered, clusters. On/near decaying logs/stumps, on wood chips/debris.

Fertile surface: 1.1 – 1.8" x 0.6 – 1.5" [3 – 4.5 cm x 1.5 – 3 cm]
Narrowly bell-shaped; granular/wrinkled surface w/o distinct pits, covered by spore mass; white-rimmed opening at apex.

Stalk: Up to 8" x 0.8 – 1.6" [\leq 20 cm x 2 – 3 cm]
Whitish/pinkish-lilac w/ pinkish-lilac (often branched) rhizomorphs. Arizing from whitish/pinkish-lilac volva.

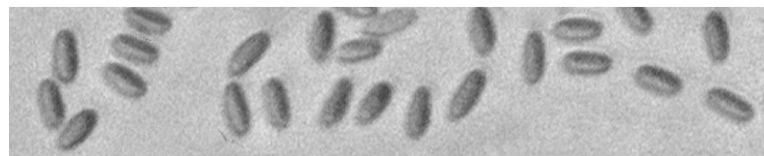
Spore Mass: Slimy, foul smelling: *Greenish-brown/olive-brown*. Ellipsoid, smooth, hyaline.

Frequency: Occasional.

Locations: BIGBR, MCHPV, RIVHL, TUFTS.

Notes: Mycobank 248500. When young, egg-like (resembling small puffball), egg-/pear-shaped, internally gelatinous giving rise to a distinct head and stalk. Pigtail specimen identified by examination of spores by *R. Solem*.

References: Bar 99. BBF 463, 17. BBH 320. Bni 508fn. BRBD 277, 68. K&M 303. Lin 835, 706. M&M 479. Roo 411fn. Stu 418. W&L 214-5.



SPORES (3.7 – 4.1 x 1.3 – 1.9 μ m): Big Branch, 10/29/2016, *R. Solem*.