

Christina's Rootshank

*Phaeocollybia christinae*  
(Fries) R. Heim



OVERALL: Western Regional Park, 9/24/2011, *R. Orr*.  
 CAP, STALK, ROOT: Western Regional Park, 9/24/2011, *J. Solem*.  
 CAP, STALK, ROOT: Western Regional Park, 9/25/2011, *J. Solem*.  
 GILLS, STALK: Western Regional Park, 9/25/2011, *R. Solem*.

Christina's Rootshank

*Phaeocollybia christinae*  
Cortinariaceae

J	F	M	A	M	J	J	A	S	O	N	D
								--+			

**ID:** Yellow-orange pointed cap; has long root.

**Habitat:** On woodchips or fallen leaves.

**Cap:** 0.8 – 2" [1 – 5 cm]

Yellow-orange (lighter near edge, conical w/knob-like umbo. Moist/sticky, shiny. Margin wavy. Pungent odor, radishy taste.

**Gills:** Light edges on darker gills (purple-/brown-black in age). Free. Close.

**Spores:** *Rust-brown*. Almond-shaped, roughened.

**Stalk:** 1.6 – 4.8" x 1/12 – 1/4 [4 – 12 cm x 2 – 5 mm]

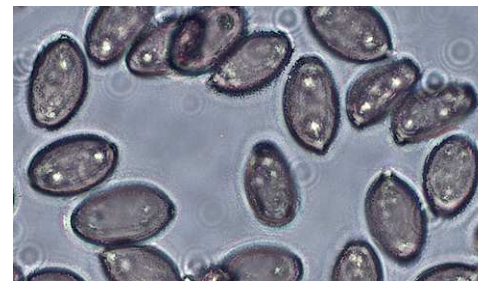
Yellow; yellow-brown below. Tapers up. Long buried root (2.3" [5.5 cm]).

**Frequency:** Uncommon.

**Locations:** WSTRP.

**Notes:** Mycobank 251405. Western Regional Park (9/25/2011) specimen identified by examination of spores by *R. Solem*. Site was visited on successive days.

**References:** Bar 214. BBF 222,305. Bni 293. M&M 298fn. Phi 192. Rog.



SPORES (8.3-9.5 X 4.8-5.5 µm):  
 Western Regional Park,  
 9/25/2011, *R. Solem*.