

Mower's Mushroom

Panaeolus foenisecii
(Persoon) J. Schroter



OVERALL: Schooley Mill Park,
11/9/2017, *J. Solem*.
GILLS and STALK: Schooley Mill
Park, 11/9/2017, *J. Solem*.
TOP: Schooley Mill Park, 11/9/2017,
J. Solem.
CAPS: Schooley Mill Park, 11/9/2017,
J. Solem.

Mower's Mushroom

Panaeolus foenisecii
Phathyrellaceae

J	F	M	A	M	J	J	A	S	O	N	D
				--+	+++	+++	+++	++-	+-	-	+

ID: Cap grayish-brown (lighter in age); convex/bell-shaped, margin grooved when fresh. Stalk white (darkens in age).

Habitat: Scattered, groups. In grassy areas.

Cap: 0.2 – 1.1" [5 – 30 mm]

Reddish-brown/grayish-brown (grayish-tan in age). Dry. Smooth (sometimes finely cracked when dry). Convex/ bell-shaped. Margin slightly grooved when fresh/moist. Flesh brown/tan, thin, brittle.

Gills: Brown (purple-/blackish-brown in age). Attached. Close.

Spores: Light-/dark-/purple-brown/brown. Elliptical w/ apical pore, roughened.

Stalk: 1 – 4" x 1/16 – 1/8" [2.5 – 10 cm x 1.5 – 3 mm]

White/pinkish-brown (darkening in age). Smooth. Cylindrical (or w/ small/ hairy bulb at base). Hollow; splits lengthwise.

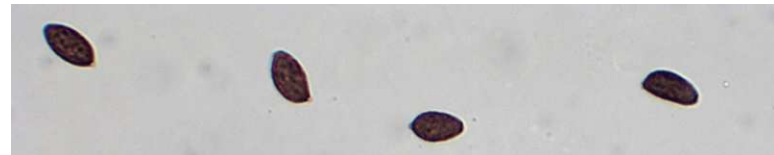
Frequency: Very common.

Locations: BIGBR, BRNBR, FRANF, GATWY, GONRA, HAMVL, HOLLO, HOUC, JACPD, MPENA, OTHER, PIGTL, ROGOR. SLMLP, TRIRS, WINTR, WSTRP.

Notes: Mycobank 356834. Schooley Mill Park specimen identified by examination of spores by R. Solem.

Synonyms: *Panaeolinus foenisecii*. *Psilocybe foenisecii*.

References: Bar 204. BBF 217, 304. BBH 185. Bni 341. K&M 293. Lin 606, 26. M&M 435. Pac 216. Roo 200. Stu 234.



SPORES (13.8-15.6 x 7.6-8.9 µm): Schooley Mill Park, 11/9/2017, *R. Solem*.