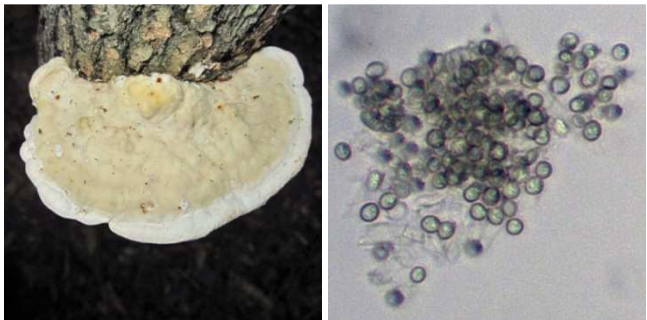


Mossy Maple Polypore

Oxyporus populinus
(Schumacher) Donk



OVERALL: Daniels, PVSP, 8/8/2016, *J. Solem*.
PORES: Franciscan Friars, 11/7/2011, *R. Solem*.
UPPER SURFACE (old): Wincopin Trail, 5/1/2009, *J. Solem*.
UPPER SURFACE (old): Daniels, PVSP, 8/8/2016, *J. Solem*.
SPORES (3.1-3.6 X 3.0-3.3 µm): Daniels, PVSP, 8/8/2016, *R. Solem*.

Mossy Maple Polypore

Oxyporus populinus
Agaricomycetes

J	F	M	A	M	J	J	A	S	O	N	D
++-	-++	-++	+--	+++	+++	+++	+++	+++	-++	+++	+++

ID: Top grayish-white or covered w/ moss; sharp uneven margin. Tough.

Habitat: Solitary, scattered, overlapping clusters. On standing hardwood, especially maple.

Cap: 1.1 – 8" [3 – 20.5 cm]
Grayish-/creamy white. Covered w/ dense matted hairs (smooth in age). Margin sharp, uneven. Top often covered w/ moss. Flesh (to 3/4" [2 cm]), white/yellowish-brown, fibrous-tough.

Pore Surface: White/creamy-white. Pores (4 – 7/mm) angular/circular. Tubes (<= 5 mm).

Spores: *White*. Smooth, oval, hyaline.

Frequency: Common.

Locations: CENPK, DANPV, FRANF, GONRA, HENPV, MANWD, MCHPC, MPENA, PIGTL, ROBNC, SLMLP, UMDCF, WSKPV, WSTRP.

Notes: Mycobank 275074. Daniels, PVSP, (8/8/2016) specimen identified by examination of spores by R. Solem.

References: Bar 151. BBF 392, 398. BBH 271. Bin 293. Lin 472, 521. Phi 311. Rog. Stu 337.