

Black-staining Polypore

*Meripilus sumstinei* (Murrill) M.J. Larsen & Lombard



OVERALL: Wincopin Trail. 8/2/2016, *J. Solem*.  
UPPER SURFACE (overall): MPENA, 7/5/2010, *R. Solem*.  
PORES: MPENA, 7/5/2010, *R. Solem*.  
OVERALL: Morning Choice Trail, 7/9/2018, *J. Solem*.

Black-staining Polypore

*Meripilus sumstinei*  
Meripilaceae

J	F	M	A	M	J	J	A	S	O	N	D
					++	+++	+++	+++	++-	++-	--+

**ID:** Body whitish/yellowish becoming gray-brown; circular/irregular/fused; concentrically zoned and velvety; thin and fibrous. Pores white/grayish (stain black in age), decurrent. Bruises black.

**Habitat:** Solitary, groups. On ground at base of hardwood trees and stumps (oak).

**Fruiting Body:** 2.4 – 8” [6 – 20.5 cm], each part Whitish/yellowish (brownish-yellow, then dark ochraceous/ grayish-brown in age). Fan-/spoon-shaped, fleshy-fibrous. Velvety-hairy. Margin becomes thin, sharp, wavy, often lobed. Stains black when fresh (instant or not). Flesh (1 – 10 mm; up to 16 mm) white, fleshy-fibrous.

**Pores:** White/creamy white; stain black. Angular (3 – 6/mm).

**Stalk:** 0.4 – 1.4” [1 – 3 cm] Ochre/reddish-brown; central; stains black.

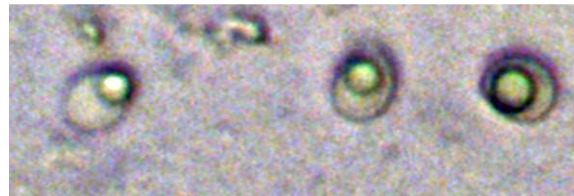
**Spores:** White. Nearly round, smooth, hyaline.

**Frequency:** Very common.

**Locations:** BIGBR, CEDLP, FRANF, HIRIP, LONGC, MANWD, MCHPV, MPENA, MTPLT, MURHL, NOLAP, OTHER, RKBRP, ROBNC, SAVPK, TRIRS, WFRDP, WINTR, WSKPV, WSTRP.

**Notes:** Mycobank 135100. Composite fruiting bodies to 16” (41 cm) or more. Morning Choice Trail, PVSP, specimen identified by examination of spores by *R. Solem*.

**References:** BBF 387, 398. BBH 258. Bin 373. Bni 424. BRBD 263, 62. E&S 312. K&M 276. Lin 470, 471. Phi 300. Stu 312. W&L 555.



SPORES (4.7-5.5 X 4.2-4.6 µm):  
Morning Choice Trail, PVSP, 7/9/2018, *R. Solem*.