

None

Megacollybia rodmanii f. *murina*
R.H. Petersen, K.W. Hughes & Lickey



OVERALL: Rockburn Branch Park,
6/3/2014, J. Solem.
STALK, BASE, GILLS: Gorman Stream
Valley NRA, 5/17/2017, J. Solem.
TOP: Long Corner, PRSP, 8/7/2009, J.
Solem

None

Megacollybia rodmanii f. *murina*
Marasmiaceae

J	F	M	A	M	J	J	A	S	O	N	D
				-+-	---	---	++	---	---		

ID: Cap dull brownish-gray, streaked w/ dark radial fibers. Stalk white, dry; not easily detached from cap; *long* rhizomorphs at base.

Habitat: Solitary, scattered, groups, clusters. On or near decaying hardwoods.

Cap: 1 – 6" [2.5 – 15 cm]

Dull brownish-gray streaked w/ dark radial fibers when young. Dry/moist. Smooth. Convex. Incurved margin (when young). Flesh white, moderately thick in center.

Gills: White/pale gray. Moderately spaced.

Spores: White. Ellipsoid, smooth, hyaline.

Stalk: 3 – 5" x 0.4 – 1.2" [7.5 – 13 cm x 1 – 3 cm]

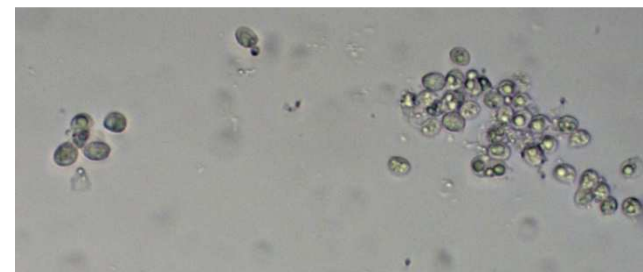
White. Dry. Does not detach easily from cap. White, long thick rhizomorphs. Equal/tapers down. Hollow.

Frequency: Fairly common..

Locations: BIGBR, HIRIP, GONRA, HOLLO, LONGC, RKBRP, ROGOR, TUFTS.

Notes: Also see previous entry (*M. rodmanii* f. *rodmanii*). KOH negative on cap of form *murina*. The references below all use *M. platyphylla*; the ones with photos most like this *forma* are listed. (There is no separate Mycobank number for forma *murina*.)

References: Bni 207. Kuo. Lin 807, 265. M&S 159. Phi 53. Roo 209.



SPORES (8.1-8.6 X 4.9-5.6 µm): Gorman Stream Valley NRA,
5/17/2017, R. Solem.