

Broad Gill

Megacollybia rodmanii f. *rodmanii*
R.H. Petersen, K.W. Hughes & Lickey



OVERALL: Long Corner, PRSP, 6/27/2009, *J. Solem*.
 TOPS: Gorman Stream Valley NRA, 5/19/2010, *J. Solem*.
 GILLS: Gorman Stream Valley NRA, 5/19/2010, *J. Solem*.
 GILLS and STALK: Long Corner, PRSP, 6/27/2009, *R. Solem*.
 SPORES (7.5-8.1 X 5.6-6.0 µm): Long Corner, PRSP, 6/27/2009, *R. Solem*.

Broad Gill

Megacollybia rodmanii f. *rodmanii*
Marasmiaceae

| | | | | | | | | | | | |
|---|---|---|---|-----|-----|-----|-----|-----|-----|----|---|
| J | F | M | A | M | J | J | A | S | O | N | D |
| | | | | +++ | +++ | +++ | +++ | +++ | +++ | +- | |

ID: Cap dull brownish, streaked w/ dark radial fibers. Stalk white, dry; not easily detached from cap; rhizomorphs at base.

Habitat: Solitary, scattered, groups, clusters. On or near decaying hardwoods.

Cap: 1 – 6" [2.5 – 15 cm]
Dull brownish-gray (disc darker); streaked w/ dark radial fibers (when young). Dry/moist. Smooth. Convex (nearly flat in age). Flesh white, moderately thick in center.

Gills: White/grayish; margin wavy. Attached. Subdistant. Very broad. Thick (13 mm). Secondary gills.

Spores: *White*. Broadly ellipsoid, smooth.

Stalk: 3 – 5" x 0.4 – 1.2" [7.5 – 13 cm x 1 – 3 cm]
White. Dry. Does not detach easily from cap. Equal/tapers down. Hollow.

Frequency: Abundant.

Locations: BENBR, BIGBR, BOLPL, BRNBR, CASCT, CEDLP, DANPV, FRANF, GONRA, HAMVL, HENPV, HIRIP, HOLLO, HOUCH, LONGC, manwd, MARPV, MCHPV, MPENA, MTPLT, MURHL, NOLAP, OTHER, PATRP, PIGTL, RKBRP, ROBNC, ROGOR, SAVPK, SLMLP, SYRIV, UMDCF, WATLP, WSTRP, WSTPV, WINTR.

Notes: Mycobank 530330. Long Corner specimen identified by examination of spores by *R. Solem*. Photos are of mature specimens.

Synonyms: *M. platyphylla*. *Tricholomops*'s *platyphylla*.

References: Bar 302. BBF 203, 301. Bni 207. E&S 214. K&M 275. Kuo. Lin 807, 265. M&M 175. Roo 209.

None

Megacollybia rodmanii f. *murina*
R.H. Petersen, K.W. Hughes & Lickey



OVE"ALL: Rockburn Branch Park,
6/3/2014, J. Solem.
STALK, BASE, GILLS: Gorman Stream
Valley NRA, 5/17/2017, J. Solem.
TOP: Long Corner, PRSP, 8/7/2009, J.
Solem

None

Megacollybia rodmanii f. *murina*
Marasmiaceae

| | | | | | | | | | | | |
|---|---|---|---|----|-----|-----|----|-----|-----|---|---|
| J | F | M | A | M | J | J | A | S | O | N | D |
| | | | | -+ | --- | --- | ++ | --- | --- | | |

Cap dull brownish-gray, streaked w/ dark radial fibers. Stalk white, dry; not easily detached from cap; *long* rhizomorphs at base.

Habitat: Solitary, scattered, groups, clusters. On or near decaying hardwoods.

Cap: 1 – 6" [2.5 – 15 cm]

Dull brownish-gray streaked w/ dark radial fibers when young. Dry/moist. Smooth. Convex. Incurved margin (when young). Flesh white, moderately thick in center.

Gills: White/pale gray. Moderately spaced.

Spores: White. Ellipsoid, smooth, hyaline.

Stalk: 3 – 5" x 0.4 – 1.2" [7.5 – 13 cm x 1 – 3 cm]

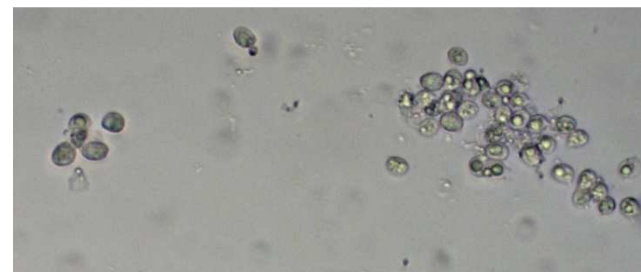
White. Dry. Does not detach easily from cap. White, long thick rhizomorphs. Equal/tapers down. Hollow.

Frequency: Fairly common..

Locations: BIGBR, HIRIP, GONRA, HOLLO, LONGC, RKBRP, ROGOR, TUFTS.

Notes: Also see previous entry (*M. rodmanii* f. *rodmanii*). KOH negative on cap of form *murina*. The references below all use *M. platyphylla*; the ones with photos most like this *forma* are listed. (There is no separate Mycobank number for forma *murina*.)

References: Bni 207. Kuo. Lin 807, 265. M&S 159. Phi 53. Roo 209.



SPORES (8.1-8.6 X 4.9-5.6 µm): Gorman Stream Valley NRA,
5/17/2017, R. Solem.