

Wolf's Milk

Lycogala epidendrum (Linnaeus) Fries



OVERALL (young): Centennial Park, 10/9/2009, B Ott.
 OVERALL (maturing): Henryton, 10/26/2009, R Orr.
 OVERALL (mature): Schooley Mill Park, 11/4/2014, J. Solem.

Wolf's Milk

[*Lycogala epidendrum*](#)
 Tubiferaceae

J	F	M	A	M	J	J	A	S	O	N	D
++-	---	---	+++	+++	+++	+++	+++	+++	+++	+++	+++

ID: Body globular pinkish-gray (filled w/ orange liquid when young), purple-brown in age, spores become powdery when mature.

Habitat: Scattered, crowded groups. On decayed wood (often pine).

Fruiting Body: 1/8 – 5/8" [3 – 15 mm]

Cinnabar-red/pinkish-gray (sand-colored/olivaceous-brown/nearly black in age). Round/nearly round/hemispherical. Roughened.

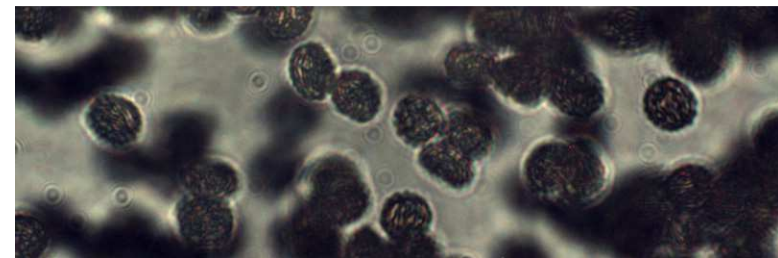
Spores: Peridium *orange liquid* when young, then *solid pinkish-gray/ochre*, finally *purple-brown/pinkish and powdery*. Nearly round, reticulate, dark gray.

Frequency: Abundant.

Locations: BENBR, BIGBR, BOLPL, BRNBR, CASCT, CEDLP, CENPK, DANPV, DFWMA, FRANF, GONRA, HENPV, HIRIP, HOLLO, HOUCH, LONGC, MCHPV, MPENA, MTPLT, MURHL, NOLAP, OTHER, PATBT, PIGTL, RKBPR, ROBNC, ROGOR, SLMLP, SUKBR, SYRIV, UMDCF, WATFD, WSKPV, WSTRP, WINFM, WINTR.

Notes: Mycobank 205910. Schooley Mill Park record identified by examination of spores by R. Solem.

References: Bar 45. Bin 371. E&S 380. Lin 848, 665. Myx 135.



SPORES (7.3 – 8.5 X 6.5 – 7.2 µm): Schooley Mill Park, 11/4/2014, R. Solem.