

None

*Lentaria micheneri*  
(Berkeley & M.A. Curtis) Corner



OVERALL: Savage Park, 9/7/2020, J. Solem.  
SIDE: Western Regional Park, 6/17/2011, J. Solem  
OVERALL: Savage Park, 9/7/2020, J. Solem.

None

[\*Lentaria micheneri\*](#)  
*Lentariaceae*

J	F	M	A	M	J	J	A	S	O	N	D
					+	-	-	+	+	-	-

**ID:** Body ochre/tan.

**Habitat:** Solitary, scattered. On ground in leaves, on cones or decaying wood.

**Fruiting Body:** Up to 1.5" [4 cm]  
Ochre/tan (often pinkish). Branches repeatedly forked w/ tine-like pointed tips (often whitish). Flesh bitter.

**Spores:** *White*. Ellipsoid, smooth, hyaline.

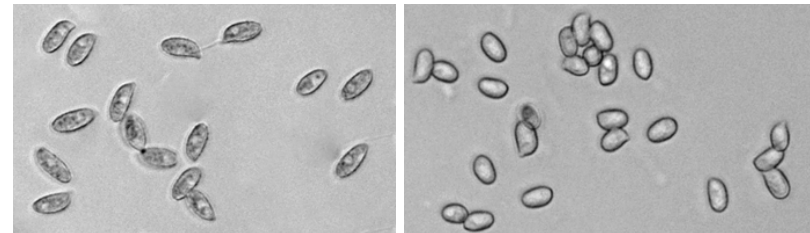
**Stalk:** ¼ – 1" [6 – 25 mm]  
Whitish, surrounded by white mycelium.

**Frequency:** Uncommon.

**Locations:** FRANF, PIGTL, SAVPK, UMDCF, WSTRP.

**Notes:** Mycobank 299435. Savage Park and Western Regional Park record identified by examination and photograph of spores by R. Solem.

**References:** BBF 418key. BBH 304. Kuo. M&M 344. Rog.



SPORES (9.0-10.9 x 3.9-4.5 µm): Savage Park, 9/7/2020, R. Solem.

SPORES (6.6-7.3 x 3.9-4.7 µm): Savage Park, 9/7/2020, R. Solem.