

Sulphur-milk Lactarius

Lactarius theiogalus (Bullard) Gray



OVERALL: Big Branch, 6/7/2010, R. Solem.
GILLS, LATEX and STEM: Big Branch, 6/7/2010, J. Solem.

Sulphur-milk Lactarius

Lactarius theiogalus
Russulaceae

J	F	M	A	M	J	J	A	S	O	N	D
					+	-	-	-	-	+	+

ID: Cap cinnamon/orange; convex, funnel-shaped in age. Base coated w/ mycelium. Latex white, may dry yellowish.

Habitat: Groups, clusters. Wet ground in leaf liter/moss in mixed woods.

Cap: 0.8 – 2.8" [2 – 7 cm]

Cinnamon to orange-/reddish-brown. Surface smooth. Convex (flat/funnel-shaped in age). Margin inrolled. Flesh white (yellow from latex). Latex white, may dry yellowish, becomes bitter tasting.

Gills: Pinkish-cinnamon (darker in age). Attached/decurrent. Close/subdistant.

Spores: White.

Stalk: 1 – 2" x 1/4 – 3/8" [2.5 – 5 cm x 6 – 10 mm]

Colored like cap or paler. Smooth. Equal/swollen at base. Base coated w/ mycelium. Hollow in age.

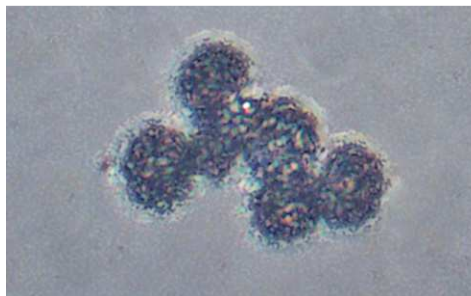
Frequency: Uncommon.

Locations: BIGBR, HIRIP.

Notes: Varieties may have a different preferred name.

Synonym: *L. theiogalus*.

References: BBF 165key. Phi 125. Roo 106.



SPORES (8.6 – 9.6 6.4 – 7.4 µm):
Big Branch, 6/7/2010,
R. Solem.