

IndigoMilk Mushroom

Lactarius indigo (Schweinitz) Fries



OVERALL: Guilford Park, 9/1/2011, *J. Solem*.
 CAP, GILLS, TALKS and CUT SURFACE: Guilford Park, 9/1/2011, *J. Solem*.
 CUT SPECIMEN: Guilford Park, 9/1/2011, *J. Solem*.
 SIDE: Murray Hill (east): 9/12/2014, *J. Solem*.
 TOP: Murray Hill (east): 9/12/2014, *J. Solem*.
 CLOSEUP of GILLS (w/ latex): Murray Hill (east): 9/12/2014, *J. Solem*.

Indigo Milk Mushroom

Lactarius indigo
 Russulaceae

J	F	M	A	M	J	J	A	S	O	N	D
						---	+	---	+++	---	

ID: Indigo blue/grayish. Disc depressed. Indigo blue latex.

Habitat: Solitary, scattered,. In oak and line forests.

Cap: 2.4 – 5.6" [5 – 15 cm]

Indigo blue (grayish) w/ silver luster in age). Convex-dpressed (more funnel-shaped in age). Smooth. Sticky. Bruises deep green. Flesh white, immediately turns indigo; stains greenish. Latex indigo blue (becoming dark green when exposed to air).

Gills: Indigo blue or paler (yellowish from spores, stain greenish. Attached. Close. Broad.

Spores: *Cream*.Oval, ornamented.

Stalk: 0.8 – 3.1" x 0.4 – 1.1" [2 – 8 cm x 1 – 3 cm]

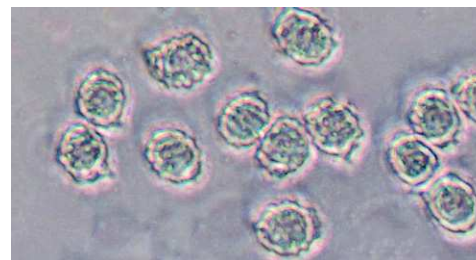
Indigo-/silver-blue, sometimes spotted. Sticky becoming dry. Often tapers down. Solid becoming hollow.

Frequency: Occasional.

Locations: GUIPK, MURHL, SAVPK.

Notes: Mycobank 220303. Murray Hill (east) specimen identified by examination of spores by R. Solem. Blue latex stains fingers.

References: Bar 307. BBH 64. BHB 191, 88-89. Bni 68. BRBD 155, 32. E&S 196. K&M 240. Kuo. Lin 686, 337. M&M 87. Phi 101. Rog. Roo 95. Stu 53.



SPORES (6.9-7.7 x 5.2-5.8 µm):
 Murray Hill (east):
 9/12/2014, *R. Solem*.