

Gray-brown Lactarius

Lactarius griseus Peck



TOPS: Rocky Gorge Reservoir, 8/24/2009, J. Solem.

GILLS: Rocky Gorge Reservoir, 8/24/2009, J. Solem.

OVERALL (w/ mycelium): Rocky Gorge Reservoir, 8/24/2009, R. Solem.

Gray-brown Lactarius

Lactarius griseus
Russulaceae

J	F	M	A	M	J	J	A	S	O	N	D
						---	---+	---	---		

ID: Cap dark brown; convex/nearly flat, small umbo; small size. Base coated w/ mycelium. Latex white and scant, dries yellowish.

Habitat: Groups, clusters. In sphagnum moss/on well-decayed wood.

Cap: 0.6 – 2" [1.5 – 5 cm]

Dark brown-/gray-purple (paler purple-/red-brown on disc, purplish-/reddish-buff on margin in age; covered w/ small scales). Convex/nearly flat w/ depressed disc and small pointed umbo. Margin inrolled (expanded and uplifted in age). Flesh white/yellow. Latex white and scant, drying to yellowish.

Gills: Whitish (pinkish/purplish-buff in age). Decurrent. Broad. Close/subdistant.

Spores: Yellowish. Nearly round, ornamented w/prominences up to 1 µm.

Stalk: 0.8 – 2.5" x 1/8 – 3/8" [2 – 6.5 cm x 3 – 10 mm]

Colored like gills at apex, purplish below (pale rosy-brown in age). Dry. Equal. Base coated w/ mycelium. Hollow.

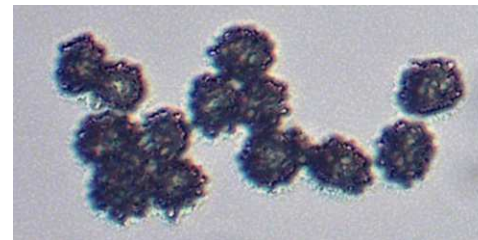
Frequency: Uncommon.

Locations: ROGOR.

Notes: Mycobank 218898. Rocky Gorge Reservoir specimen identified by examination of spores by R. Solem.

Synonym: *L. glabripes*.

References: Bar 307. BBF 171, 294. BHB 184, 81. Bni 77. M&M 99. Phi 121. Roo 91.



SPORES (6.6-7.5 X 6.5-7.4 µm):
Rocky Gorge Reservoir,
8/24/2009, R. Solem.