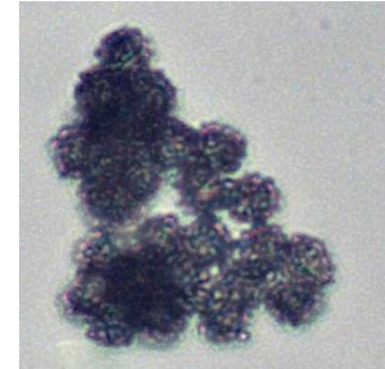


Gold Drop Milk Mushroom

Lactarius chrysorrheus Fries



CAPS w/ LATEX: High Ridge Park, 9/9/2009, R. Solem.
 CUT SURFACE: High Ridge Park, 9/9/2009, J. Solem.
 TOP Fransican Friars, 8/7/2012, J. Solem
 GILLS w/ LATEX and STALKS: Fransican Friars, 8/7/2012, J. Solem.
 SPORES (6.3-7.3 X 5.6-6.3 μm): High Ridge Park, 9/9/2009, R. Solem.

Gold Drop Milk Mushroom

[*Lactarius chrysorrheus*](#)
 Russulaceae

J	F	M	A	M	J	J	A	S	O	N	D
					-	+	+	+	+	-	-

ID: Cap pale pink; convex (funnel-shaped in age). Latex white and copious, immediately yellows. Use KOH.

Habitat: Solitary, scattered, clusters. On ground under hardwoods (often oak).

Cap: 1.2 – 3.9" [3 – 10 cm]

Pale pinkish/pale cinnamon. Smooth/finely roughened, often w/ vague concentric rings. Moist or dry. Broadly convex w/ inrolled margin (shallowly depressed/funnel-shaped in age). Latex copious, white and immediately yellows. Flesh white, yellows when cut. Taste acrid.

Gills: Whitish/pale yellowish; bruise brownish. Attached/slightly decurrent. Close. Secondary gills.


Spores: Yellowish. Broadly ellipsoid.

Stalk: 1.2 – 3.2" x 0.4 – 0.8" [3 – 8 cm x 1 – 2 cm]

Whitish. Dry. More or less equal. Flesh white; yellows when cut. Solid; stuffed in age?

Frequency: Fairly common.

Locations: DANPV, FRANF, HIRIP, LONGC, NOLAP, PIGTL, ROGOR, RKBRP, UMDCF.

Notes:  Mycobank 233874. High Ridge Park and Murry Hill specimens identified by examination of spores by R. Solem. Latex oozing from gills changes to yellow so quickly does not appear to have been white. KOH turns cap surface yellowish to pale olive.

References: Bin 133. BBF 157key. BBH 62. BHB 160, 65-66. Bni 72fn. BRBD 150, 31. E&S 197fn. Kuo. M&M 91. Phi 115. Stu 38.