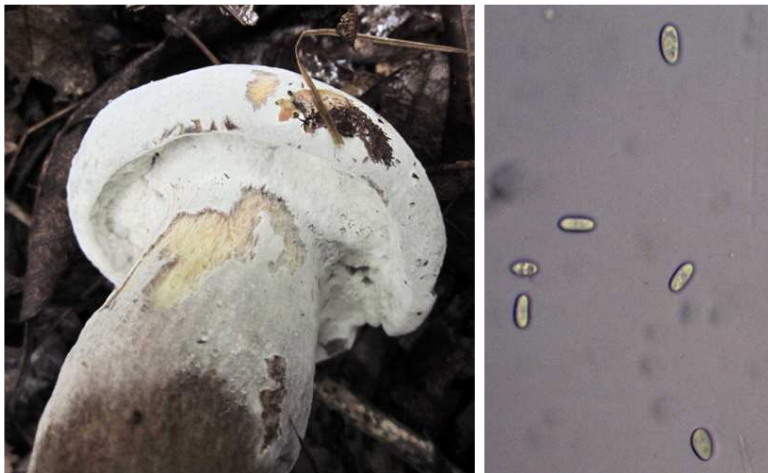


None

Hypomyces boletiphagus
Rogerson & Samuels



OVERALL: Hammond Village, 8/8/2017, *J. Solem*.

OVERALL: Hammond Village, 8/8/2017, *J. Solem*.

CONIDIA (8.2-11.9 X 3.8-6.3 μm): Hammond Village, 8/8/2017, *R. Solem*.

None

[*Hypomyces boletiphagus*](#)
Hypocreaceae

J	F	M	A	M	J	J	A	S	O	N	D
						---	+	---	---		

ID: *Boletaceae* parasite. Surface white and powdery, then orange/reddish-orange, and finally buff/brown and bumpy. Use KOH.

Habitat: Infects various members of *Boletaceae*, growing over surface and eventually distorting all parts. Parasitized caps are dense and may be buried.

Fruiting Body

Asexual stage (anamorph; appears first): White and cottony, covering host. Produces conidia, becomes pale yellow, then yellow-brown and powdery.

Sexual stage (not shown): Buff/brown perithecia form a bumpy texture.

Conidia: *White*. Oval, smooth, hyaline.

Frequency: Uncommon.

Locations: HAMVL

Notes: Mycobank 228511. Hammond Village specimen identified by examination of conidia and chemical test by R. Solem. Affected surfaces turn yellow to red to blackish with KOH.

References: BBB 318fn.