

Comb Tooth *Hericium coralloides* (Scopoli) Persoon



OVERALL: Clemens Crossing (Columbia), 10/8/2013, *J. Solem*.  
OVERALL: Schooley Mill Park, 10/17/2013, *J. Solem*.  
SETTING: Clemens Crossing (Columbia), 10/8/2013, *J. Solem*.

Comb Tooth

[\*Hericium coralloides\*](#)  
Hericiaceae

J	F	M	A	M	J	J	A	S	O	N	D
	+					---	---	---	+++	-+	

**ID:** Body white/salmon/pinkish; spreading branches w/ spines in rows.

**Habitat:** Solitary. groups. On decaying hardwood logs or stumps.

**Fruiting Body:** 2.8 – 10” x 2.8 – 8” [7 – 25 cm x 7 – 20 cm].  
Whitish/salmon/pinkish. Flesh, thick, white, soft. Cluster of spreading branches w/ spines in rows along branches like teeth on a comb. Spines 1/8 – 3/8” (3 – 10 mm), in tufts at branch tips.

**Spores:** *White*. Oval/nearly round, slightly roughened.

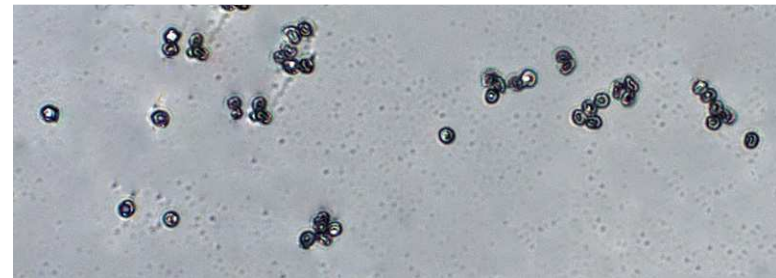
**Frequency:** Occasional.

**Locations:** HENPV, OTHER, SLMLP.

**Notes:** Mycobank 120231. Schooley Mill Park specimen identified by examination of spores by R. Solem.

**Synonym:** *H. ramosum*

**References:** BBF 407, 12. BBH 292. Bni 471fn. BRBD 202, 47. K&M 205. Lin 431, 549. M&M 408fn. Phi 327. Roo 396. Stu 396. W&L 590.



SPORES (4.1-4.5 X 2.9-3.5 µm): Schooley Mill Park, 10/17/2013, *R. Solem*.