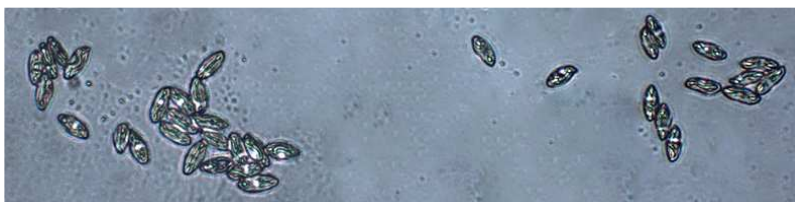


None

Hemileccinum hortonii
(A.H. Sm. & Thiers) M. Kuo & B. Ortiz



OVERALL and PORES: MPENA, 7/22/2010, R. Solem.
CAP (older): Wincopin Trail, 8/21/2011, R. Solem.
PORES and STALK (older): Wincopin Trail, 8/21/2011, R. Solem.
SPORES (11.2-12.5 X 5.0-5.4 µm): MPENA, 7/22/2010, R. Solem.

None

[*Hemileccinum hortonii*](#)
Boletaceae

J	F	M	A	M	J	J	A	S	O	N	D
					-+	-+	-+	-+	-		

ID: Chestnut/ochre (or paler). Pitted cap. Pores and stalk yellow. Use NH₄OH and KOH.

Habitat: Solitary, scattered. Mixed woods (oak, beech, hemlock).

Cap: 1.6 – 4.8" [4 – 14 cm]
Chestnut/ochre, cinnamon/reddish-brown (sometimes paler in age). Dry (viscous when moist). Dimpled/pitted. Flesh whitish, sometimes bluing weakly/slowly (or not).

Pores: Yellow (sometimes duller-/olive-yellow in age). Sometimes staining slowly/weakly blue. Circular/angular (2-3/mm). Tubes (5-10 mm).

Spores: Olive-brown. Fusiform, smooth.

Stalk: 2.4 – 4" x 1.4 – 0.8" [6 – 10 cm x 1 – 2 cm]
Pale yellow/tan (occasionally w/ reddish tones near base). Equal/enlarged near base

Frequency: Occasional.

Locations: MPENA, PIGTL, WINTR.

Notes: Mycobank 829998. Wincopin specimen identified by examination of spores by R. Solem. Cap bluish-green flash w/ NH₄OH (then olive-brown); olive-brown w/ KOH.

Synonyms: *Xerocomus hortonii* (A.H. Smith & Thiers)
Manfr. Binder & Besl *Leccinum hortonii*. *Boletus hortonii*.

References: BBH 245. Bin 57. BRB1 119, 295. BRB2 421. BRBD 216, 50. K&M 116. Phi 263. Rog. Kuo. Stu 272. W&L 337-8.