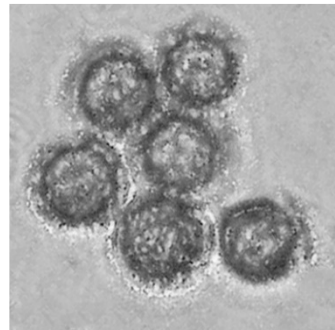


Nested Earthstar
Rounded Earthstar

Geastrum saccatum Fries



OVERALL: Guilford Park, 9/23/2011, *J. Solem*.
OVERALL (old): Guilford Park, 5/2/2011, *J. Solem*.
OVERALL: Tufts, 10/1/2020, *K. Tufts*.
OVERALL: Franciscan Friars, 7/31/2013, *J. Solem*
SPORES (3.5-5.0 µm): Franciscan Friars, 7/31/2013, *R. Solem*

Nested Earthstar
Rounded Earthstar

[Geastrum saccatum](#)
Geastraceae

J	F	M	A	M	J	J	A	S	O	N	D
				+	-	-	-	+	-	-	+

ID: Buff/tan rays (4 – 8) around ochre-brown smooth spore sac.
Habitat: Scattered, around decaying stumps, in leaf litter, under conifers.
Fruiting Body: 0.4 – 1.6" [1 – 4 cm] when closed; 0.8 – 1.6" [2 – 4 cm] when open; spore sac 0.2 – 0.8" [0.5 – 2 cm]
Buff/tan/ochre-brown when closed; 4 – 8 rays tan when open; spore sac ochre-brown, roundish w/ disc-like depression (paler) around point. Single point of attachment.
Surface: Somewhat rough when open or closed, spore sac surface smooth.
Spores: White, firm when young; *purplish-brown*, powdery at maturity. Round, warted.
Frequency: Uncommon.
Locations: FRANF, GUIPK. TUFTS, UMDCF.
Notes: Mycobank 118342. Franciscan Friars' specimen identified by microscopic examination of spores by R. Solem.
References: BBF 446key. BBH 326. Bri 503. BRBD 315, 84. K&M 182. Kuo. E&S 345. Lin 818, 636. M&M 447. Phi 336. Rog. Roo 442fn.