

Scrambled-egg Slime  
Dog Vomit

*Fuligo septica*  
(Linnaeus) F.H. Wiggins



OVERALL: Henryton, PVSP, 7/15/2009, *R. Solem*.  
OVERALL: Wincopin Trail, 5/28/2016, *J. Solem*.  
OVERALL: Wincopin Trail, 5/13/2009, *R. Solem*.  
OVERALL: Gorman Stream Valley NRA, 3/16/2011, *J. Solem*.

Scrambled-egg Slime  
Dog Vomit

*Fuligo septica*  
*Physaraceae*

J	F	M	A	M	J	J	A	S	O	N	D
+--	---	+++	+++	+++	+++	+++	+--	+-	---	-	

**ID:** Body white/yellow/reddish mass w/ red-brown flecks.

**Habitat:** Expanding clusters. On rich soil, stumps, logs, or living plants. Usually seen in cool weather (spring and fall).

**Fruiting Body:** Up to 8" x 1.2" thick [20 x 3 cm]  
White/yellowish/ochre/pink w/ red-brown flecks. Slimy when young (smooth but brittle crust in age breaks away to show black spore mass).

**Spores:** *Black/dark gray*. Round, minutely spiny.

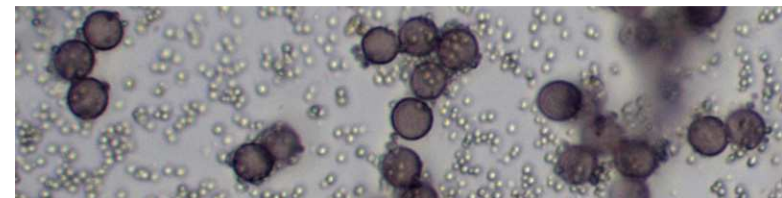
**Notes:** Cortex has calcareous granules. (Cortex of *Mucilago crustacea* has calcareous crystals.)

**Frequency:** Abundant.

**Locations:** BIGBR, BRNBR, CASCT, CEDLP, DANPV, ELKGP, FRANF, GONRA, GUIPK, HAMVL, HENPV, HOLLO, HOUCH, HTWMA, LONGC, MANWD, MARPV, MCHPV, MPENA, MTPLT, MURHL, NOLAP, OTHER, PIGTL, RKBPR, ROBNC, SLMLP, SYRIV, TRIRS, UMDCF, WATLP, WINTR, WSKPV, WSTRP.

**Notes:** Mycobank 149977.

**References:** Bar 36. Bin 339. E&S 378. Lin 845, 559. Myx 123.



SPORES (7.0-8.0 [round] µm): Wincopin Trail, 5/28/2016. *R. Solem*.