

Veiled Polypore
Cryptic Globe Polypore

Cryptoporus volvatus
(Peck) Shear



OVERALL (maturing): North Laurel Park, 4/18/2009, *R. Solem*.
LOWER SURFACE (mature): North Laurel Park, 4/18/2009, *R. Solem*.
OVERALL: Daniels, PVSP, 8/8/2016, *R. Orr*.

Veiled Polypore
Cryptic Globe Polypore

Cryptoporus volvatus
Polyporaceae

J	F	M	A	M	J	J	A	S	O	N	D
		---	++	---	++	++	++	---	---	---	+

ID: Body whitish/tan; spherical/ellipsoid/hoof-shaped; stalkless. Pores covered w/ veil, exposed only at maturity.

Habitat: Scattered, groups. On trunks and stumps of conifers.

Fruiting Body: 0.6 – 3.4" [1.5 – 8.8 cm]
Whitish/tan/pale yellow-brown. Smooth. Nearly spherical/ellipsoid/hoof-shaped, stalkless. Flesh white, soft-corky.

Pores: White/pinkish/pale brown, covered by thick whitish/yellowish membranous veil, tearing open at maturity. Circular (3 – 5/mm).

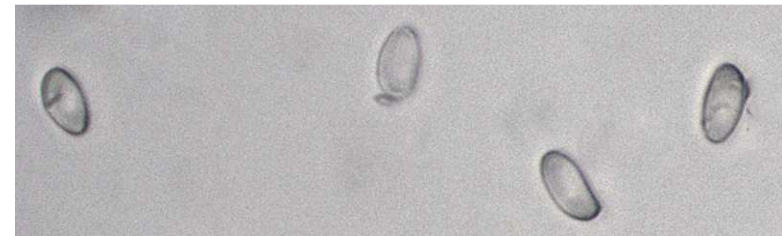
Spores: Pinkish-buff. Oval, smooth, hyaline.

Frequency: Occasional.

Locations: DANPV, NOLAP, RKBPR, ROBNC, WINTR.

Notes: Mycobank 185937. Breakdown of veil assisted by various insects and tiny arthropods, which bore holes through the membrane. Daniels, PVSP, specimen identified by examination of spores by *R. Solem*.

References: Bar 141. BBF 375, 395. BBH 263. Lin 452, 528. M&M 427. Roo 492. Stu 336.



SPORES (10.1-11.6 X 5.8-6.5 μm): Daniels, PVSP, 8/8/2016, *R. Solem*.