

Jelly Crep

*Crepidotus mollis* (Schaeffer) Staude



TOP: Pigtail, 8/17/2009, J. Solem.  
 GILLS, OVERALL: Pigtail, 8/17/2009, R. Solem.

Jelly Crep

[\*Crepidotus mollis\*](#) [or near]  
*Inocybaceae*

J	F	M	A	M	J	J	A	S	O	N	D
			---	---	+++	+++	+++	+-+	+-		

**ID:** Cap ochraceous-white w/ appressed white/brownish fibrils; flesh has gelatinous layer.

**Habitat:** Groups. On decaying hardwood (rarely conifer) bark.

**Cap:** 0.4– 3.1" [1 – 8 cm]

Color variable, olive-brown/ochraceous/ochraceous-white. Coated w/ appressed white/brownish fibers. Hygrophanous. Kidney-/fan-/shell-shaped, somewhat convex/nearly flat. Flesh (1 mm) w/ gelatinous layer.

**Gills:** Whitish; becoming cinnamon/grayish-cinnamon. Close to crowded. Edges entire or fimbriate. Secondary gills.

**Spores:** *Brown*. Broadly ellipsoid, smooth.

**Stalk:** None.

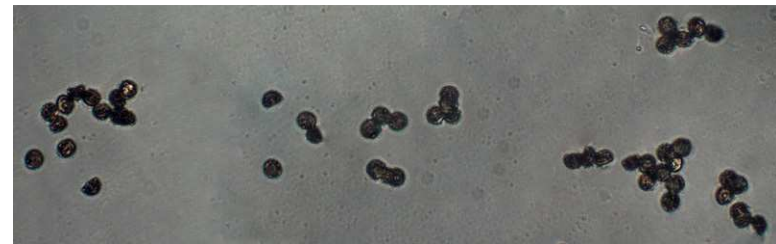
**Frequency:** Very common.

**Locations:** BRNBR, FRANF, GONRA, HENPV, MANWD, MCHPV, MPENA, MURHL, PIGTL, RKBRP, ROBNC, SLMLP, SYRIV, TRIRS, WINTR, WSTRP.

**Synonyms:** *C. fulvotomentosus*, *C. calolepis*.

**Notes:** Mycobank 204426. Pigtail specimen identified by examination of spores by R. Solem.

**References:** Bar 220. BBF 114, 283. BBH 153. Bni 272. BRBD 129, 24. Lin 637, 504. M&M 285. Phi 242. Roo 18.



SPORES (6.7-7.4 X 5.3-6.2 µm): Pigtail, 8/17/2009, R. Solem.