

Violet
Cortinarius

Cortinarius violaceus complex
(Linnaeus) Gray



SIDE: Western Regional Park, 9/29/2009, *J. Solem*.

GILLS and STALK: Western Regional Park, 9/29/2009, *J. Solem*

SIDE: Western Regional Park, 9/11/2011, *R. Orr*.

Violet Cortinarius

Cortinarius violaceus
Cortinariaceae

J	F	M	A	M	J	J	A	S	O	N	D
							+	-	+	+	-

ID: Cap dark violet w/ dark tuft-like fibrils. Gill and stalk color like cap.

Habitat: Solitary, scattered, groups. On ground/in moss in forests.

Cap: 2 – 4.8" [5 – 12 cm]

Dark violet to purple. Covered w/ fibers that form tiny tufts/scales. Dry. Convex (broadly convex/nearly flat in age, w/ or w/o small umbo). Margin inrolled (expanded in age). Flesh dark violet/grayish.

Gills: Dark violet (grayish cinnamon-brown in age). Attached/notched. Subdistant. Broad.

Spores: *Rusty-brown/rusty-cinnamon*. Oval, roughened.

Stalk: 2.8 – 5.5" x 0.4 – 1" [7 – 14 cm x 1 – 2.5 cm]

Dark violet/purplish. Dry. Covered w/ tiny matted fibrils. Tapers up. Partial veil leaves thin violet annular zone. Club-shaped base.

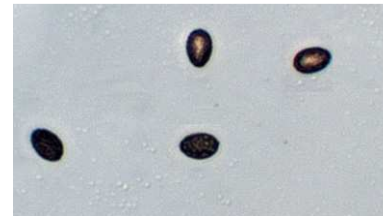
Frequency: Occasional.

Locations: LONGC, MCHPV, MURHL, PIGTL, WSTRP.

Notes: Mycobank 239546,

Subgenus: *Cortinarius*.

References: Bar 228. BBF 112, 283. BBH 174. Bni 320. BRBD 127fn. E&S 157. Lin 620, 340. M&M 312. Phi 173.



SPORES (10.8-11.1 X 6.7-7.1 μ m):
Western Regional Park, 9/29/2009,
R. Solem.