

Alcohol Inky Cap
Tippler's Bane

Coprinopsis atramentaria
(Bullard) Redhead, Vilgalys & Moncalvo



OVERALL: Patuxent Branch Trail, 10/25/2016, *J. Solem*.
OVERALL (w/ deliquescing cap): High Ridge Park, 10/17/2010, *J. Solem*.
SIDE: Patuxent Branch Trail, 10/25/2016, *J. Solem*.

Alcohol Inky Cap
Tippler's Bane

Coprinopsis atramentaria
Psathyrellaceae

J	F	M	A	M	J	J	A	S	O	N	D
				- - -	- - -	- - -	- - -	- - -	- + +	- - -	

ID: Cap gray/gray-brown; egg-shaped to broadly conic.

Habitat: Clusters. In grass or wood chips at base of tree.

Cap: 1.5 – 3" [4 – 7.5 cm]

Gray/gray-brown (white when very young). Smooth slightly scurfy (sometimes w/ tiny scales); striated. Dry. Oval/egg-shaped (may have upturned margin in age). Flesh grayish-white (becoming black as it deliquesces).

Gills: White, soon gray (black as they deliquesce). Free. Crowded.


Spores: Black. Smooth, oval/almond-shaped, dark brown.

Stalk: 1.5 – 6" x 0.4 – 0.8" [4 – 15.5 cm x 1 – 2 cm]

White. Silky. Tapered downward or equal. Annular ring at base. Hollow in age.

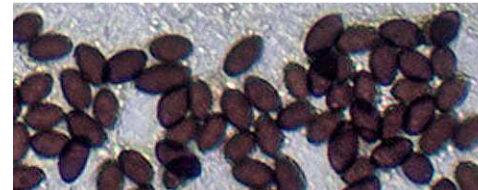
Frequency: Uncommon.

Locations: HIRIP, PATBT.

Notes:  Mycobank 220725. Very bad digestive reaction w/ alcohol.

Synonym: *Coprinus atramentarius*.

References: Bar 196. BBF 102, 280. BBH 180. Bni 330. BRBD 123, 23. E&S 150. K&M 149. Lin 596, 19. M&M 229. Phi 235. Stu 219. W&L 272-3.



SPORES (8.3-10.3 x 5.2-6.2 μ m):
Patuxent Branch Trail,
10/24/2016, *R. Solem*.