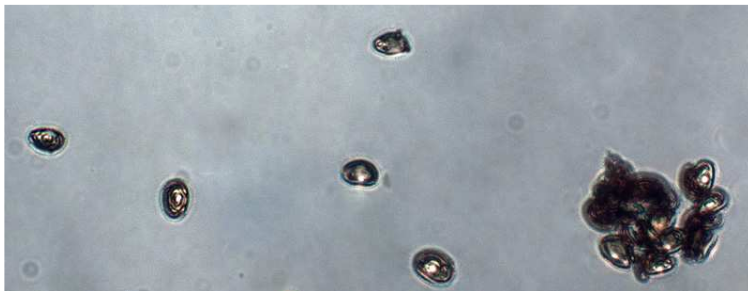


Brown Dunce Cap

Conocybe tenera (Schaeffer) Fayod



OVERALL: Gorman Stream Valley NRA, 5/9/2009, S. Muller.
 SPORES (10.0-11.3 X 5.6-6.3.µm): Gorman Stream Valley NRA, 5/9/2009,
 R. Solem.

Brown Dunce Cap

[*Conocybe tenera*](#)
 Bolbitiaceae

J	F	M	A	M	J	J	A	S	O	N	D
				+++	+++	---	---	---	---	---	+

ID: Cap rusty-brown; conic/bell-shaped, striate.

Habitat: Scattered, groups. On ground in forests, gardens, lawns, fields.

Cap: 0.4 – 0.8" [1 – 2 cm]

Red-/rusty-brown to fulvous (pale tawny/ocraceous in age). Conic/bell-shaped. Striate from margin to disc. Flesh pale whitish-brown.

Gills: Whitish; pale-/cinnamon-brown in age. Nearly free. Close/subdistant. Narrow.

Spores: *Rusty-brown*. Ellipsoid, smooth w/ apical pore.

Stalk: 1.1 – 3.1" x 1/16 – 1/8" [3 – 8 cm x 1 – 3 mm]

Whitish; brown/dark brown in age. Pruinose/nearly smooth. Equal/slightly enlarged base.

Frequency: Fairly common.

Locations: ANNRK, FARMS, GONRA, HAMVL, MCLUR, PIGTL, RKBRP, WINTR.

Notes: Mycobank 255051. Gorman Stream Valley NRA specimen identified by examination of spores by R. Solem.

References: Bar 211. BBF 99, 280. BBH 164. Bni 304fn. BRBD 304fn. Lin 561, 75. M&M 269. Phi 214.