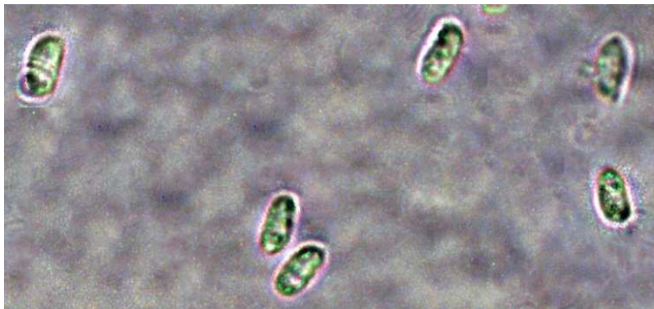


None

Climacodon pulcherrimus
(Berkeley & M.A. Curtis) Nikolajeva



TOP: Franciscan Friars, 8/2/2014, *J. Solem*.
 FERTILE SURFACE: Franciscan Friars, 8/2/2014, *J. Solem*.
 SIDE (showing teeth): Franciscan Friars, 8/2/2014, *J. Solem*.
 CLOSEUP FERTILE SURFACE: Franciscan Friars, 8/2/2014, *J. Solem*.
 SPORES (4.0 – 4.8 X 2.0 – 2.3 μm): Franciscan Friars, 8/2/2014, *R. Solem*.

None

Climacodon pulcherrimus
Phanerochaetaceae

J	F	M	A	M	J	J	A	S	O	N	D
						---	+	---	---	---	

ID: Whitish fan-shaped caps w/ hairy top and fertile surface w/ short spines. Use KOH.

Habitat: Solitary, fused or overlapping clusters on decaying hardwoods.

Cap: 1.4 – 4" [3.5 – 10 cm]
Whitish to pale/pinkish tan. Semicircular/fan-shaped. Densely hairy. Flesh white, fibrous, filled w/ creamy white, sticky sap.

Fertile Surface: Whitish (pinkish-tan in age); covered w/ short spines 1/8 – 3/16" (2.5 – 5 mm).

Stalk: Short/absent; fruiting body arises from single base.

Spores: *White*. Elliptic, smooth, hyaline.

Frequency: Uncommon.

Locations: FRANF.

Synonyms: *Steccherinium pulcherrimum*. *Hydnum pulcherrimum*

Notes: Mycobank 328406. KOH turns cap and flesh red (ours turned pink in photo three). Franciscan Friars specimen identified by examination of spores by R. Solem.

References: BBF 411, 12. K&M 140. Kuo.