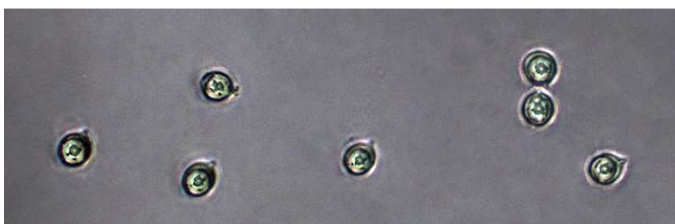


Spindle-shaped Yellow Coral *Clavulinopsis fusiformis*
(Sowerby) Corner



OVERALL: Pigtail, 8/27/2009, *R. Solem*.

OVERALL: Rockburn Branch Park, 8/15/2014, *J. Solem*.

OVERALL: Franciscan Friars, 8/28/2014, *J. Solem*.

SPORES (4.5 – 6.5 X 4.1 – 6.1 µm): Franciscan Friars,
8/28/2014, *R. Solem*.

SPORES (6.1 – 7.0 X 5.9 – 6.5 µm): Rockburn Branch Park,
8/15/2014, *R. Solem*.

Spindle-shaped Yellow Coral

[Clavulinopsis fusiformis](#)
Clavariaceae

J	F	M	A	M	J	J	A	S	O	N	D
					+-	+-	+++	+++	+++		

ID: Yellowish; worm-like/cylindrical/somewhat flattened; apex rounded to pointed, usually unbranched. Use KOH.

Habitat: Solitary, groups, clusters. On ground in forests.

Fruiting Body: Up to 3.5" H x 1/16 – 3/8" W [14 cm x 1.5 – 10 mm]
Yellowish. Usually unbranched, cylindric/worm-like/somewhat flattened;
smooth (sometimes wrinkled or grooved); flesh yellowish, fibrous. Apex
pointed to rounded.

Spores: *Pale yellow/white*. Nearly round, smooth, hyaline.

Frequency: Common.

Locations: BENBR, BIGBR, CEDLP, FRANF, GONRA, HIRIP, MANWD,
MCHPV, MURHL, PIGTL, RKBRP, ROBNC, ROGOR, SYRIV, WSTRP,
WINTR.

Notes: Mycobank 295057. KOH turns surface orange. Rockburn Branch
Park and Franciscan Friars specimens identified by examination of spores
by R. Solem. Franciscan Friars specimens were no more than 1" (2.5 cm)
in height; Rockburn's were nearly 3" (7.5 cm).

References: Bar 115. BBF 421. 13. BBH 303. Bni 480. BRBD 288, 73.
K&M 140. Kuo. Lin 399, 734. M&M 342. Phi 345. Stu 377.