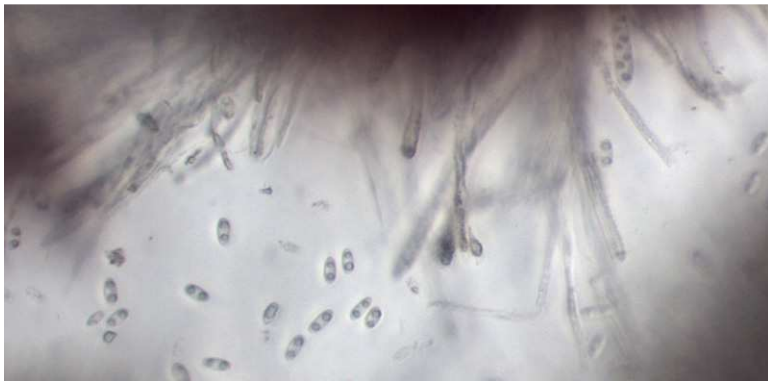


None

Chlorencoelia versiformis (Persoon) J.R. Dixon



CLOSEUP: MPENA, 8/8/2015, *R. Orr*.

INFERTILE SURFACE: MPENA, 8/8/2015, *J. Solem*.

SPORES (8.8-9.8 X 3.2-4.1 μ m) and TOMENTUM: MPENA, 8/8/2015, *R. Solem*.

None

[*Chlorencoelia versiformis*](#)
Hemiphacidiaceae

J	F	M	A	M	J	J	A	S	O	N	D
							++-	---+	---		

ID: Fertile surface (olive-green), outer surface (dull reddish-brown, velvety); short stalk.

Habitat: Scattered, groups. On decaying wood.

Fruiting Body: 1/4 – 1" [6 – 25 mm] diameter

Outer surface dull reddish-brown, velvety (appressed white hairs). Fertile surface olive-green/olive-brown/orange-brown. Saucer-/goblet-shaped. Margin toothed/irregular, may be inrolled.

Stalk: 1/8 – 1/4" [3 – 6 mm].

Spores: Hyaline. Cylindrical, smooth, 0 – 4 oil drops, hyaline.

Hyphae and tomentum: filiform.

Frequency: Occasional.

Locations: HENPV, MPENA, MURHL, SLMLP.

Notes: Mycobank 311054. Henryton, PVSP, Middle Patuxent Environmental Area, Murray Hill, and Schooley Mill Park specimens identified by examination of spores or tomentum by R. Solem..

Synonym: *Chlorosplenium versiforme*.

References: BBB 366. BBF 492, 499. E&S 52. Stu 421.

http://www.indianamushrooms.com/chlorencoelia_versiformis.html