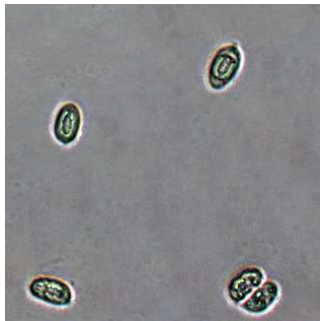


Cinnabar Chanterelle  
Cinnabar-red Chanterelle

*Cantharellus cinnabarinus*  
(Schweinitz) Schweinitz



TOPS: MPENA, 8/19/2009, *R. Solem*.  
SIDE: Savage Park, 6/25/2009, *J. Solem*.  
FERTILE SURFACE and STALK: MPENA, 9/30/2012, *B. Ott*.  
OVERALL: Wincopin Trail, 6/29/2014, *J. Solem*.  
SPORES (7.5 – 8.9 X 4.4 – 5.3 µm): Wincopin Trail, 6/29/2014, *R. Solem*.

Cinnabar Chanterelle  
Cinnabar-red Chanterelle

[\*Cantharellus cinnabarinus\*](#)  
*Cantharellaceae*

J	F	M	A	M	J	J	A	S	O	N	D
				+	+	+	+	+	+	+	+

**ID:** Cap salmon-red, fades; convex/funnel-shaped in age. Blunt gill-like ridges. Peppery taste.

**Habitat:** Scattered, groups. On ground/in moss in hardwood forests (especially oak).

**Cap:** 0.4 – 1.8" [1 – 4.5 cm]

Reddish-orange/salmon-red fading to paler pinkish-orange (colors fade in sunlight). Smooth (or nearly). Convex, broadly convex and depressed (funnel-shaped in age). Margin inrolled/uplifted (wavy in age). Flesh pale pink/white (becoming reddish-orange). Taste slowly becomes peppery.

**Fertile surface:** Pale reddish-orange to orange-salmon. Decurrent w/ distant forking, blunt, gill-like ridges w/ crossveins.

**Spores:** *Pinkish-cream*. Ellipsoid, smooth, hyaline.

**Stalk:** 0.8 – 2" x 0.1 – 0.4" [2 – 5 cm x 3 – 10 mm]

Reddish-orange (pale pinkish-orange in age). Cylindrical/tapers down, often curved.

**Frequency:** Abundant.

**Locations:** BENBR, BIGBR, CASCT, DANPV, GATWY, GONRA, HIRIP, JACPD, LONGC, MCHPV, MPENA, MURHL, OTHER, PIGTL, RKBRP, ROGOR, SAVPK, SVMLT, SYRIV, TRIRS, TUFTS, WINTR, WSKPV, WSLPV, WSTRP.

**Notes:** Mycobank 356863. Wincopin Trail specimen identified by examination of spores by *R. Solem*.

**References:** Bar 250. BBF 32, 37. BBH190. Bni 454. BRBD 93, 14. K&M 132. Lin 388, 421. M&M 333. Phi 253. Roo 113. Stu 362. W&L 465-6.