

None

Boletus curtisii Berkeley



OVERALL: Hammond Schools, 8/25/2010, J. Solem.

PORES and STALK: Hammond Schools, 8/25/2010, J. Solem.

None

Boletus curtisii
Boletaceae

J	F	M	A	M	J	J	A	S	O	N	D
							+++	+-	-	-	-

ID: Yellow-orange; convex; viscid.

Habitat: Solitary, scattered, groups. On ground in coniferous or mixed woods.

Cap: 1.1 – 3.5" [3 – 9.5 cm]

Yellow-orange (brownish/whitish areas in age). Convex (broadly convex/flat in age). Viscid/glutinous. Margin w/ narrow band of tissue; incurved when young.

Pores: Whitish/buff/pale yellow (darker in age). Circular/angular (2 – 3/mm). Tubes (6 – 12 mm).

Spores: Olive-brown. Elliptical/subventricose, smooth.

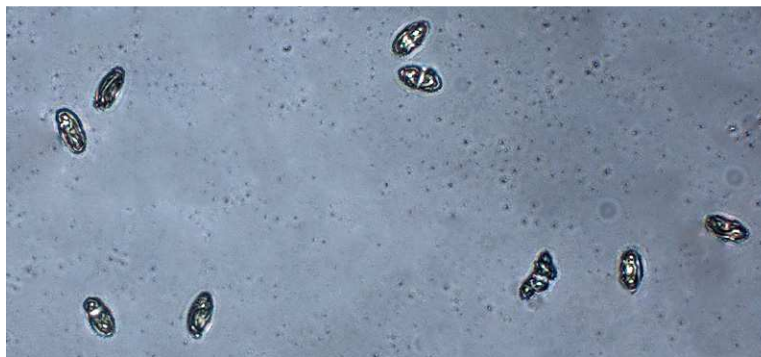
Stalk: 2.4 – 4.8" x 1/4 – 1/2" [6 – 12 cm x 6 – 13 mm]

Pale yellow/yellow. Viscid/glutinous. Scurfy at apex, smooth below. Base w/ white mycelium.

Frequency: Occasional. TRIRS.

Notes: Mycobank 210465. Hammond Schools specimen verified by examination of spores by R. Solem.

References: BRB 106, 289. KUM 115. M&M 389.



SPORES (10.8-13.0 X 5.1-6.5 µm): Hammond Schools, 8/25/2010, R. Solem.