

None

*Boletus campestris* A.H. Sm. & Thiers



TOP: MPENA, 7/18/2011, J. Solem.

OVERALL: MPENA, 7/18/2011, J. Solem.

PORES and STALK: MPENA, 7/31/2012, J. Solem.

None

*Boletus campestris*  
Boletaceae

J	F	M	A	M	J	J	A	S	O	N	D
					--+	+++	++-	--+	---		

**ID:** Rose-red; convex; velvety; cracked in age. Pores yellow/greenish. Flesh and pores stain blue-green. Use KOH and NH<sub>4</sub>OH.

**Habitat:** Solitary, scattered, groups. Lawns, open woodlands, roadsides.

**Cap:** 0.8 – 1.5" [2 – 4 cm]

Rose-red (pinkish-red w/ yellow showing through cracks in age). Convex (broadly convex in age). Dry. Velvety (cracked in age). Flesh yellow/pale yellow; stains blue-green when cut.

**Pores:** Yellow (greenish-/olive-yellow in age). Circular/angular (1 – 2/mm). Tubes (4 – 8 mm). Stain dark-blue.

**Spores:** Olive-brown. Elliptical/subfusoid, smooth.

**Stalk:** 1.1 – 2.8" x 1/4 1/3 8" [3 – 7 cm x 5 – 11 mm]

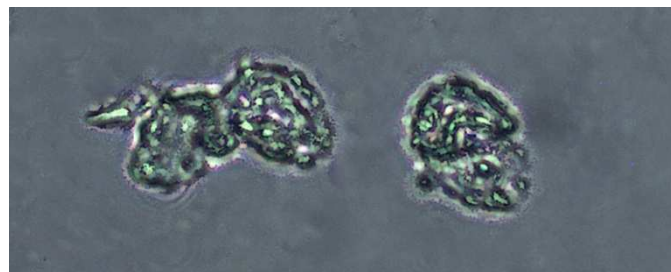
Pale yellow at top, deeper yellow at base (typically w/ reddish pruinescence). Dry. Flesh yellow; stains greenish-blue when cut. Equal. Solid.

**Frequency:** Fairly common.

**Locations:** CASCT, HAMVL, MPENA, RKBRP, ROBNC, SYRIV, WSTRP.

**Notes:** Mycobank 309651. MPENA specimen verified by examination of spores by R. Solem. KOH: cap stains yellow; flesh stains orange. NH<sub>4</sub>OH: removes blue stain from flesh; cap negative.

**References:** BRB 101, 288. BBF 324key. KUM 114. Kuo. Phi 258.



SPORES (9.9-10.5 X 5.7-6.4 µm): MPENA, 7/31/2012, R. Solem.