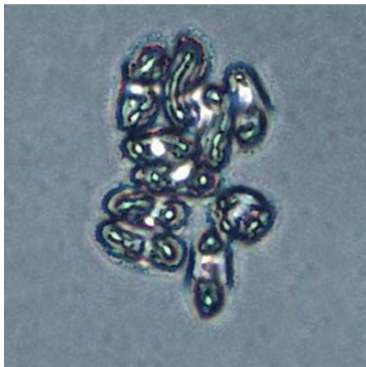


None

*Boletellus intermedius* A.H. Sm. & Thiers



CAP, PORES, STALK: Daniels, 8/12/2011, *J. Solem*.

CAP, PORES, STALK (old): Rockburn Branch Park, 7/28/2010, *J. Solem*.

CAPS (old): Rockburn Branch Park, 7/28/2010, *J. Solem*.

SPORES (10.0-10.5 X 4.5-5.9  $\mu$ m): Rockburn Branch Park, 7/28/2010, *R Solem*.

None

*Boletellus intermedius*  
Boletaceae

J	F	M	A	M	J	J	A	S	O	N	D
							+	+	-	-	-

**ID:** Rose-red; convex; velvety; cracked in age. Pores yellow/greenish. Stains blue-green. Use KOH and NH<sub>4</sub>OH.

**Habitat:** Scattered, groups. Open woodlands (oak).

**Cap:** 1.5 – 4" [4 – 10 cm]

Rose-red (soon grayish, then olive-brown/olive-gray in age). Convex (broadly convex/nearly plane in age). Dry. Velvety (cracked in age). Margin incurved when young. Flesh yellow-pink through cracks; stains blue.

**Pores:** Yellow (brownish-yellow in age). Irregular (1 – 2/mm). Tubes (7 – 12 mm). Stains blue.

**Spores:** *Olive-brown*. Subelliptical/fusoid, weakly longitudinally striate.

**Stalk:** 2 – 4.8" x 1/4 1/4 5/8" [5 – 12 cm x 7 – 16 mm]

Yellow at top, punctate w/ red dots below; faint ribs. Dry. Nearly equal. Solid. White/pale yellow mycelium.

**Frequency:** Uncommon.

**Locations:** DANPV, RKBPR.

**Notes:** Mycobank 309622. Rockburn Branch Park specimen verified by examination of spores by R. Solem. KOH: cap stains yellow; flesh stains orange. NH<sub>4</sub>OH: *removes blue stain from flesh; cap negative*.

**References:** BRB 85, 283.